

Lecture 5:

Convolutional Neural Networks

Administrative

Assignment 1 due Wednesday April 17, 11:59pm

- **Important: tag your solutions with the corresponding hw question in gradescope!**
- Some people working locally (not on Google Cloud) have had a problem with the submission script. A patch will be released very soon for this, look for an update on piazza.

Assignment 2 will also be released Wednesday

Administrative

Project proposal due **Wednesday Apr 24**, 11:59pm

See last Friday's discussion section on designing a project

Administrative

If you need to request an alternate midterm time:

See Piazza for form, fill it out by 4/25 (two weeks from today)

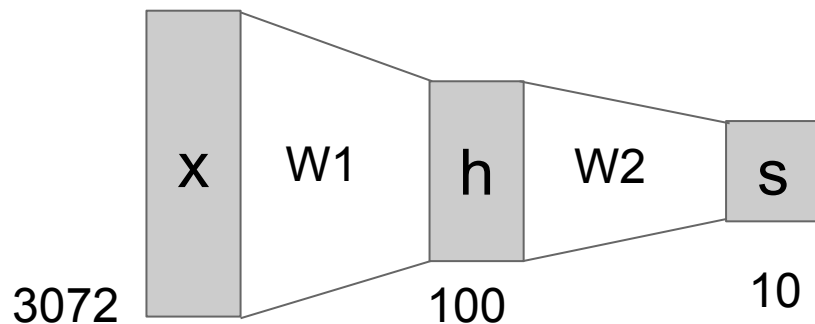
Last time: Neural Networks

Linear score function:

$$f = Wx$$

2-layer Neural Network

$$f = W_2 \max(0, W_1 x)$$



Next: Convolutional Neural Networks

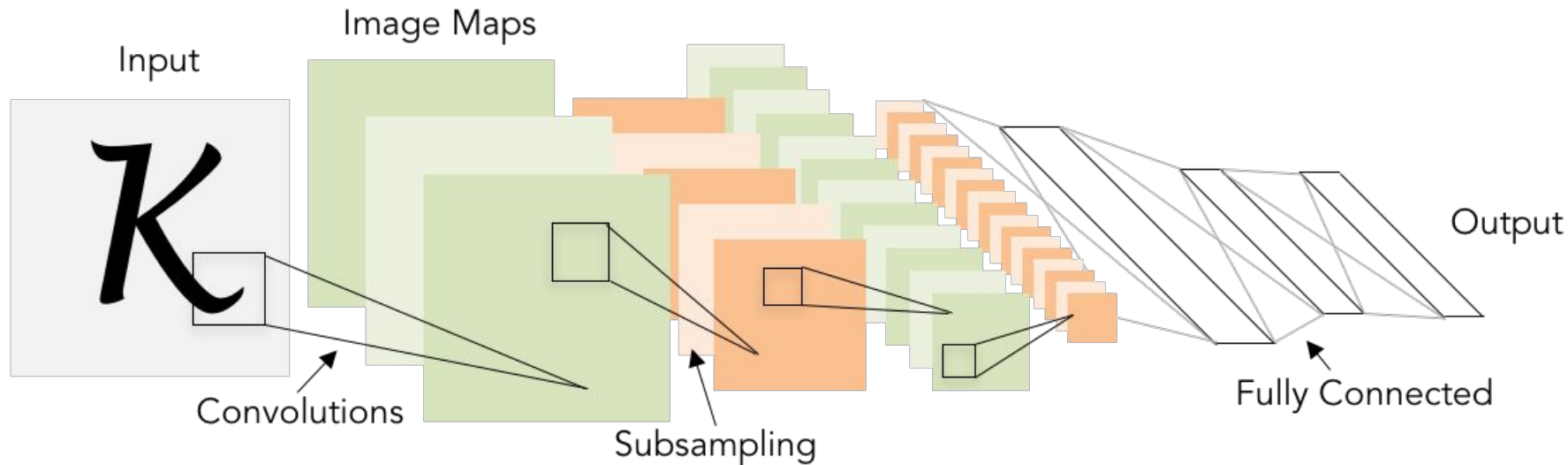


Illustration of LeCun et al. 1998 from CS231n 2017 Lecture 1

A bit of history...

The **Mark I Perceptron** machine was the first implementation of the perceptron algorithm.

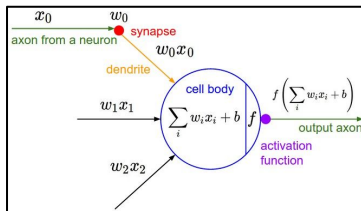
The machine was connected to a camera that used 20×20 cadmium sulfide photocells to produce a 400-pixel image.

recognized
letters of the alphabet

update rule:

$$w_i(t+1) = w_i(t) + \alpha(d_j - y_j(t))x_{j,i}$$

$$f(x) = \begin{cases} 1 & \text{if } w \cdot x + b > 0 \\ 0 & \text{otherwise} \end{cases}$$

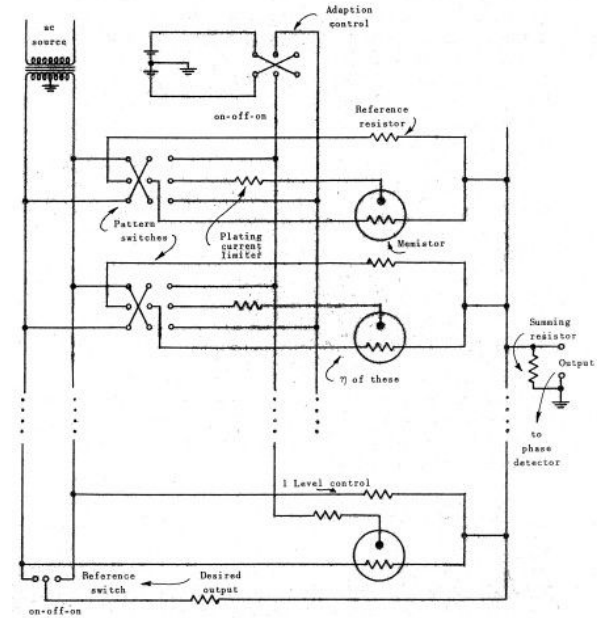
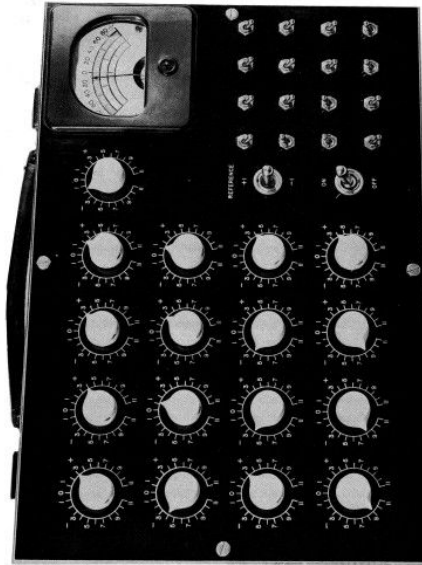
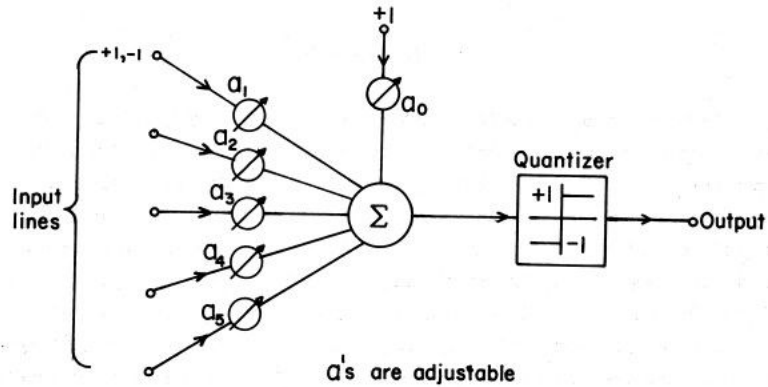


Frank Rosenblatt, ~1957: Perceptron



[This image](#) by Rocky Acosta is licensed under [CC-BY 3.0](#)

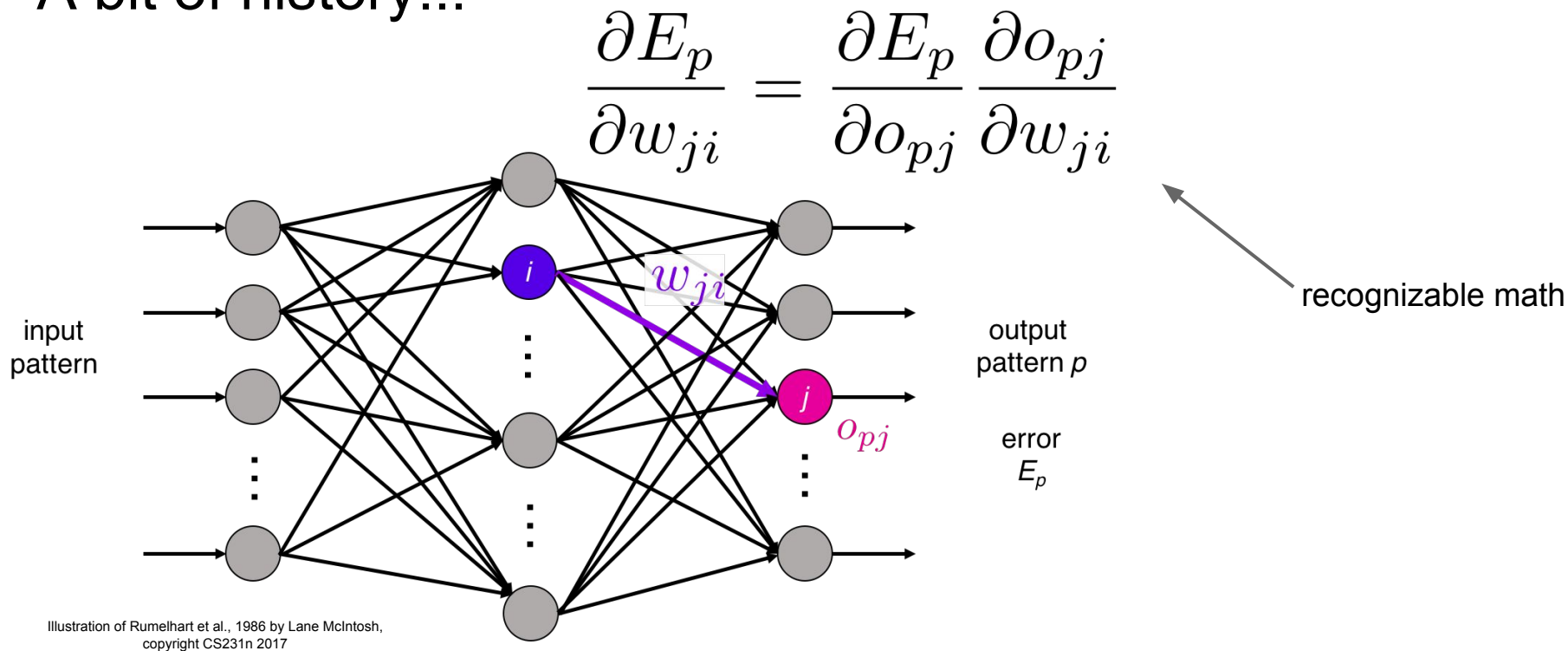
A bit of history...



Widrow and Hoff, ~1960: Adaline/Madaline

These figures are reproduced from [Widrow 1960, Stanford Electronics Laboratories Technical Report](#) with permission from [Stanford University Special Collections](#).

A bit of history...



Rumelhart et al., 1986: First time back-propagation became popular

A bit of history...

[Hinton and Salakhutdinov 2006]

Reinvigorated research in Deep Learning

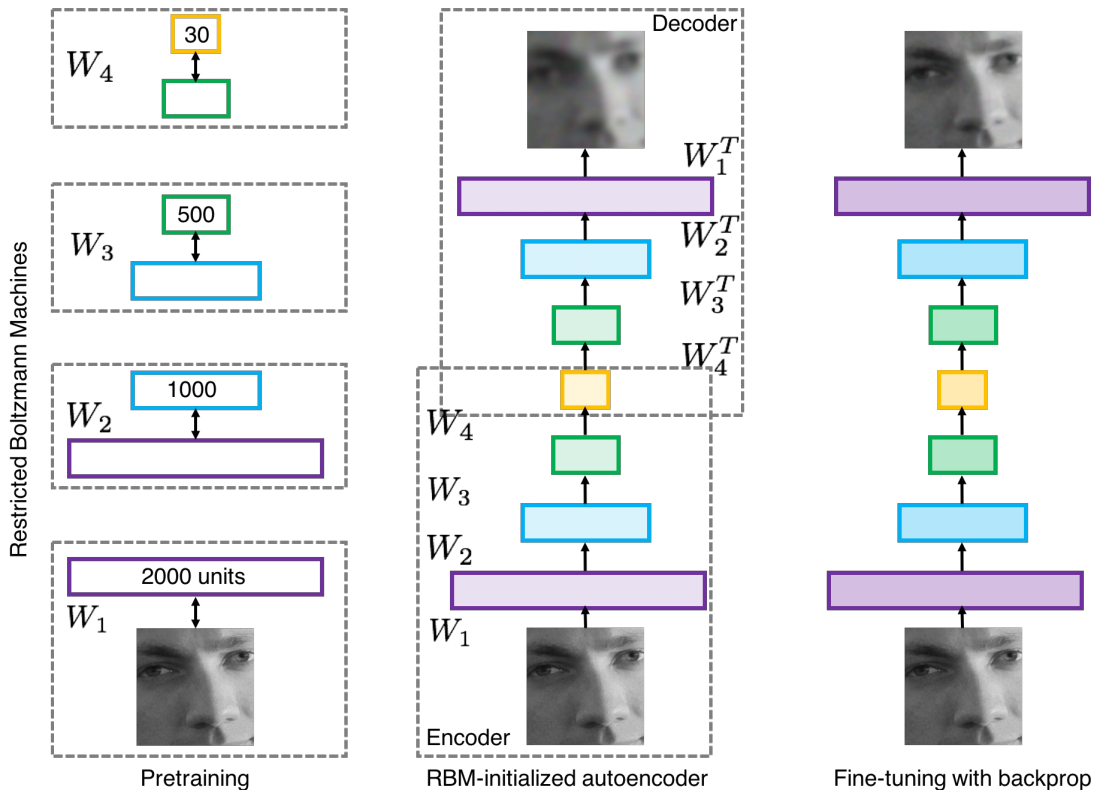


Illustration of Hinton and Salakhutdinov 2006 by Lane McIntosh, copyright CS231n 2017

First strong results

Acoustic Modeling using Deep Belief Networks

Abdel-rahman Mohamed, George Dahl, Geoffrey Hinton, 2010

Context-Dependent Pre-trained Deep Neural Networks for Large Vocabulary Speech Recognition

George Dahl, Dong Yu, Li Deng, Alex Acero, 2012

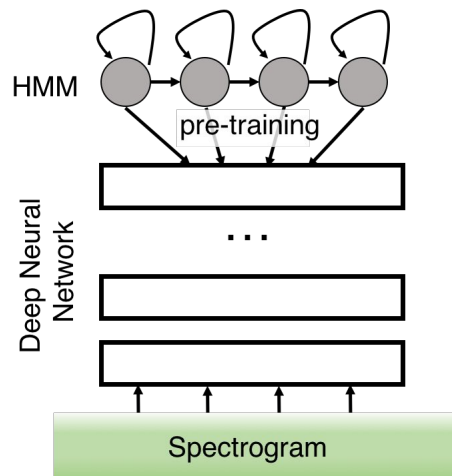
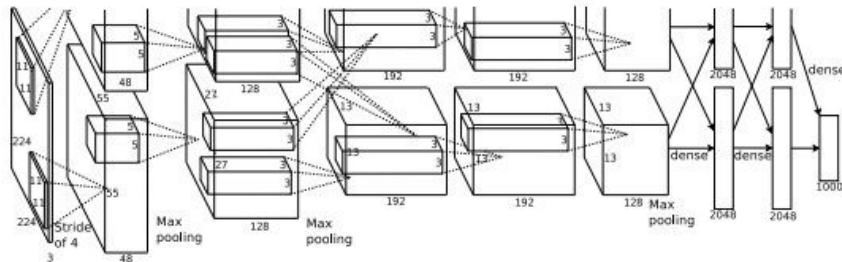


Illustration of Dahl et al. 2012 by Lane McIntosh, copyright CS231n 2017

Imagenet classification with deep convolutional neural networks

Alex Krizhevsky, Ilya Sutskever, Geoffrey E Hinton, 2012



Figures copyright Alex Krizhevsky, Ilya Sutskever, and Geoffrey Hinton, 2012. Reproduced with permission.

A bit of history:

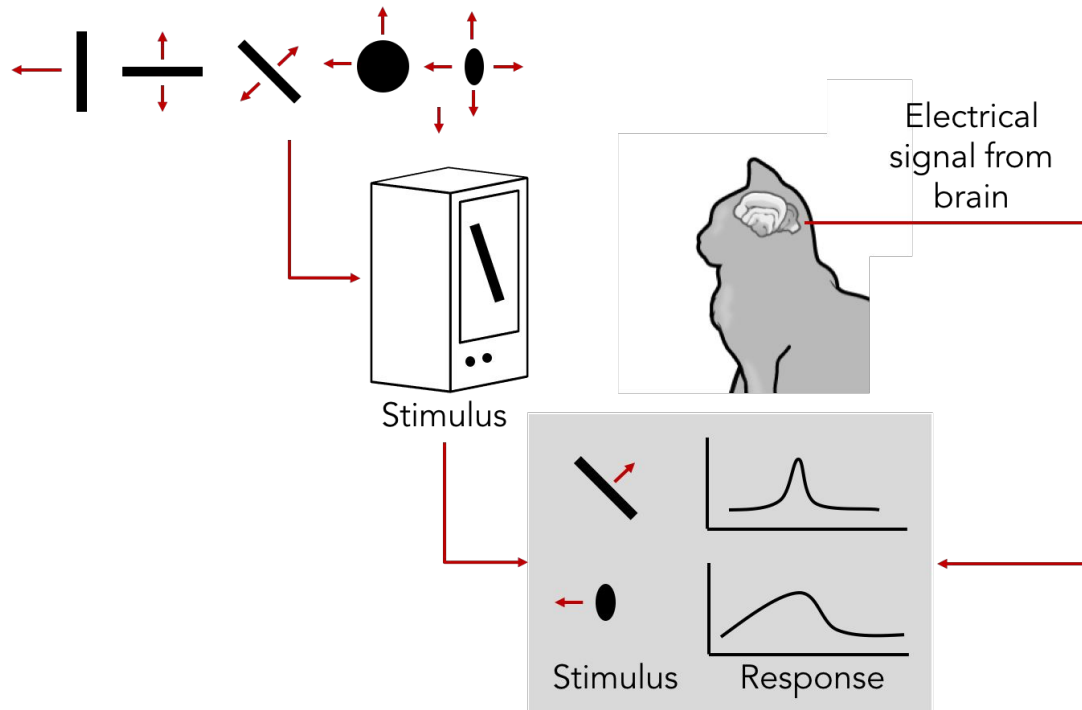
Hubel & Wiesel, 1959

RECEPTIVE FIELDS OF SINGLE
NEURONES IN
THE CAT'S STRIATE CORTEX

1962

RECEPTIVE FIELDS, BINOCULAR
INTERACTION
AND FUNCTIONAL ARCHITECTURE IN
THE CAT'S VISUAL CORTEX

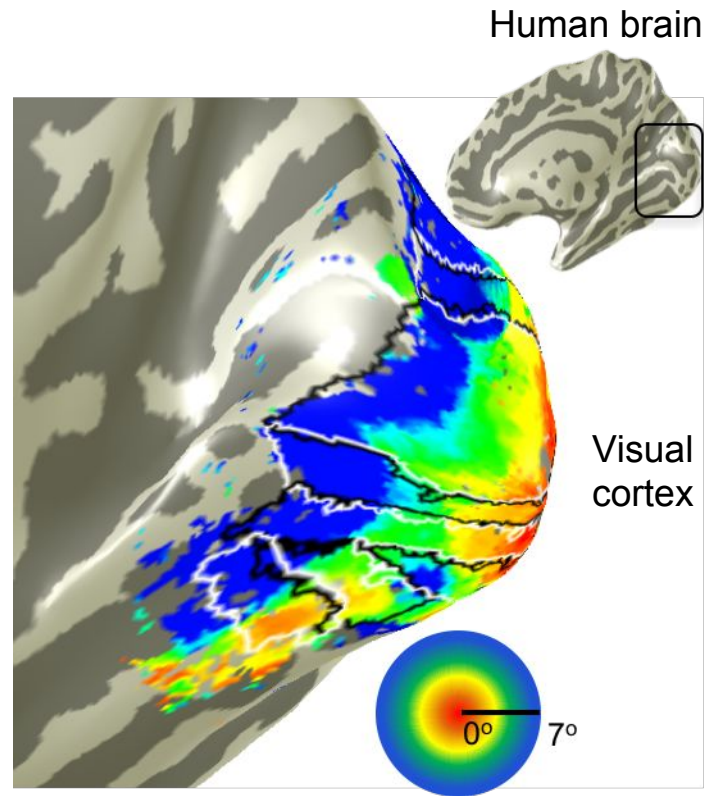
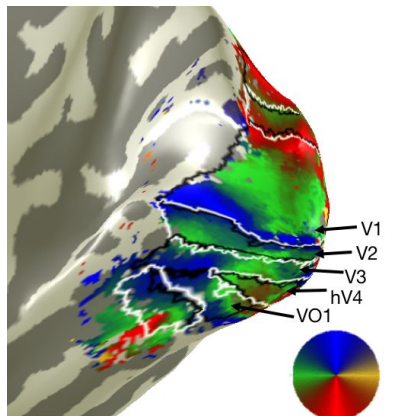
1968...



[Cat image](#) by CNX OpenStax is licensed under CC BY 4.0; changes made

A bit of history

Topographical mapping in the cortex:
nearby cells in cortex represent
nearby regions in the visual field



Retinotopy images courtesy of Jesse Gomez in the
Stanford Vision & Perception Neuroscience Lab.

Hierarchical organization

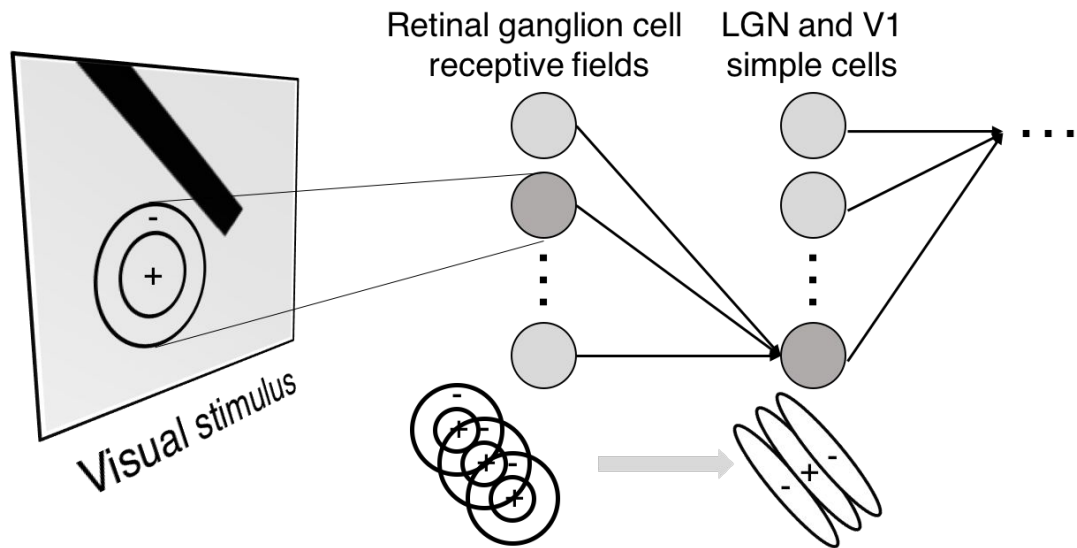
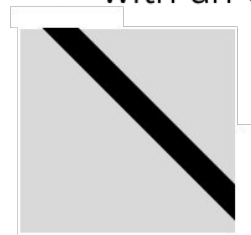


Illustration of hierarchical organization in early visual pathways by Lane McIntosh, copyright CS231n 2017

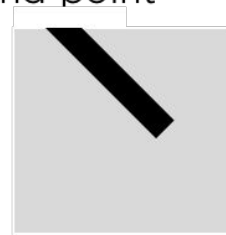
Simple cells:
Response to light
orientation

Complex cells:
Response to light
orientation and movement

Hypercomplex cells:
response to movement
with an end point



No response



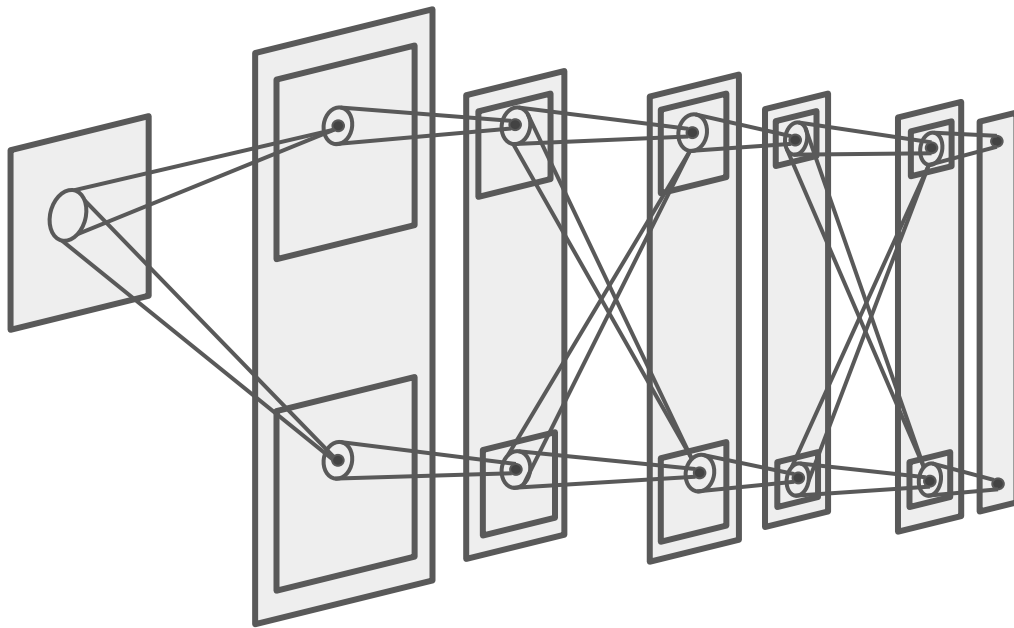
Response
(end point)

A bit of history:

Neocognitron

[Fukushima 1980]

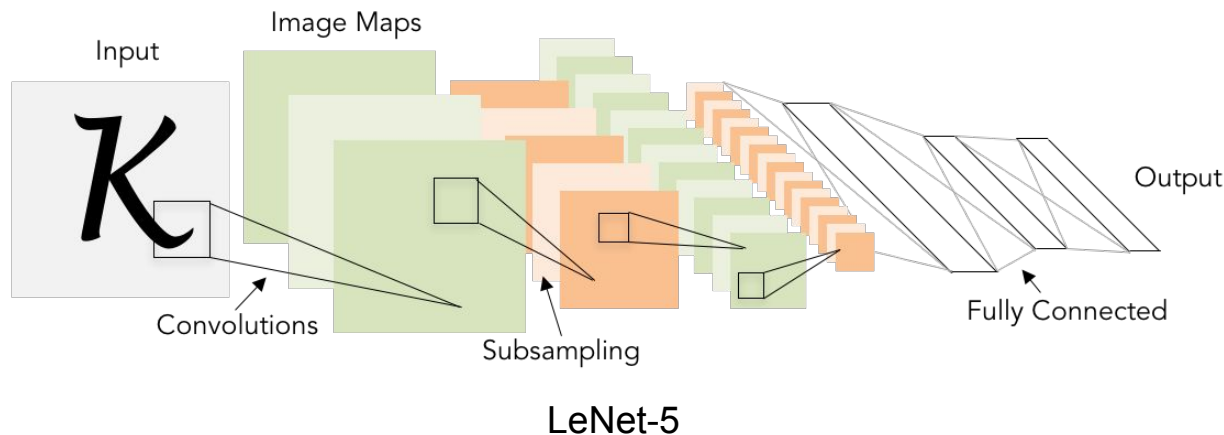
“sandwich” architecture (SCSCSC...)
simple cells: modifiable parameters
complex cells: perform pooling



A bit of history:

Gradient-based learning applied to document recognition

[LeCun, Bottou, Bengio, Haffner 1998]



A bit of history:

ImageNet Classification with Deep Convolutional Neural Networks

[Krizhevsky, Sutskever, Hinton, 2012]

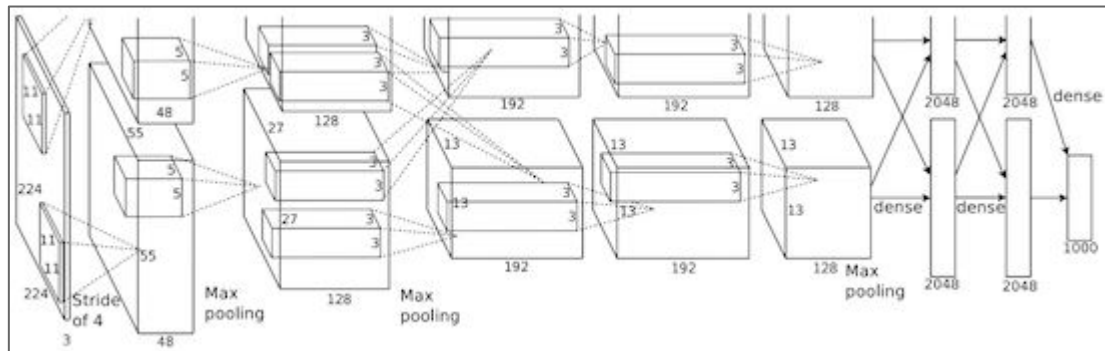
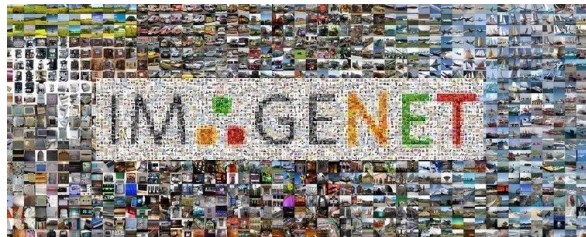
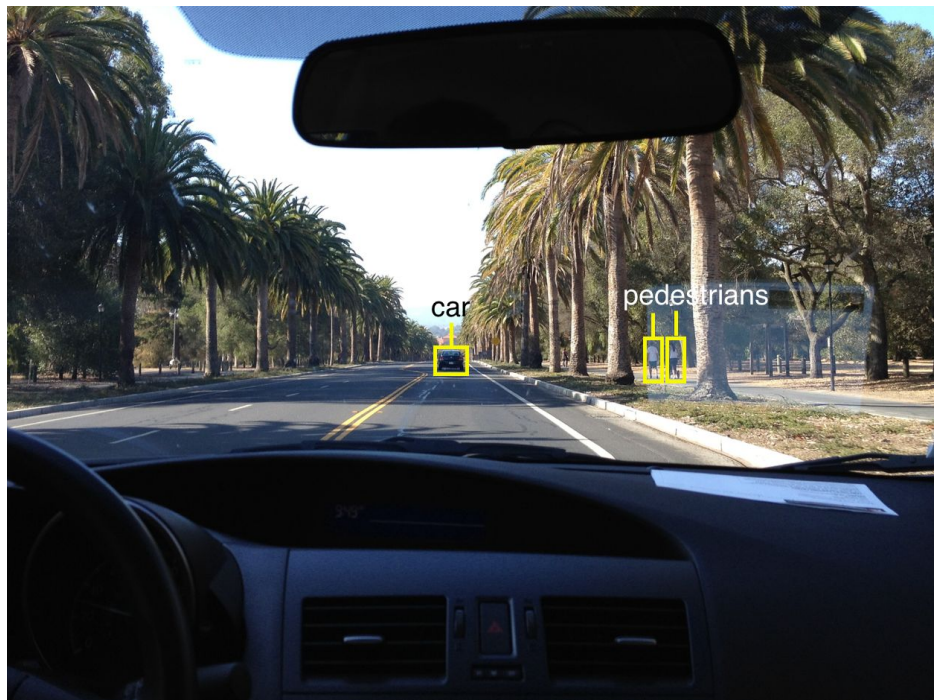


Figure copyright Alex Krizhevsky, Ilya Sutskever, and Geoffrey Hinton, 2012. Reproduced with permission.

“AlexNet”

Fast-forward to today: ConvNets are everywhere



self-driving cars

Photo by Lane McIntosh. Copyright CS231n 2017.



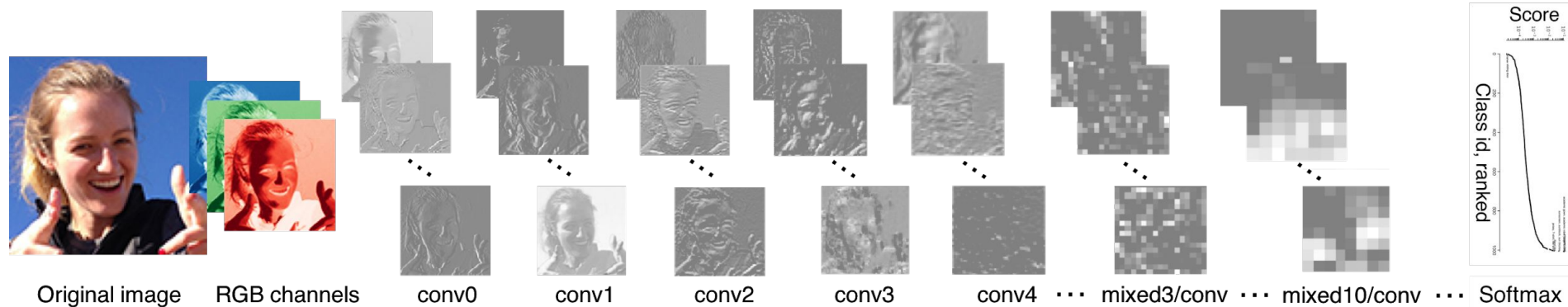
[This image](#) by GBPublic_PR is licensed under [CC-BY 2.0](#)

NVIDIA Tesla line

(these are the GPUs on rye01.stanford.edu)

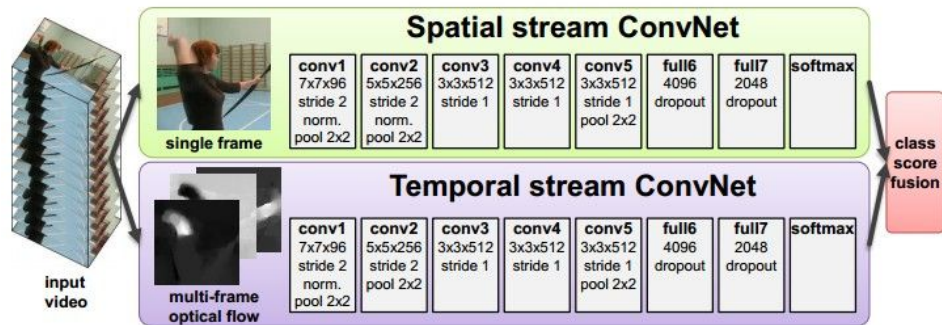
Note that for embedded systems a typical setup would involve NVIDIA Tegras, with integrated GPU and ARM-based CPU cores.

Fast-forward to today: ConvNets are everywhere



[Taigman et al. 2014]

Activations of [inception-v3 architecture](#) [Szegedy et al. 2015] to image of Emma McIntosh, used with permission. Figure and architecture not from Taigman et al. 2014.



[Simonyan et al. 2014]

Figures copyright Simonyan et al., 2014. Reproduced with permission.

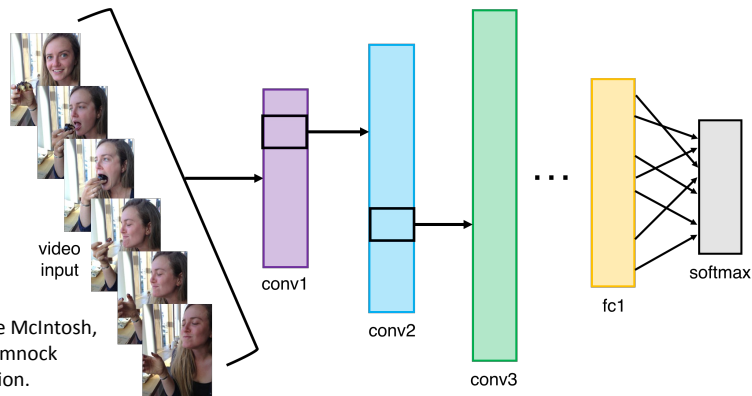


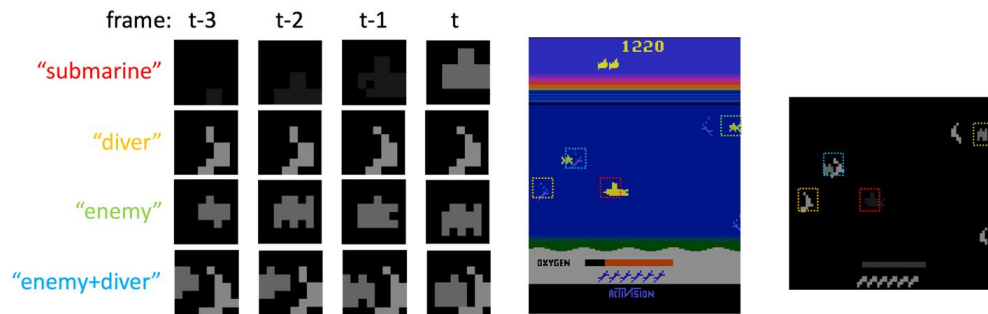
Illustration by Lane McIntosh, photos of Katie Cumnock used with permission.

Fast-forward to today: ConvNets are everywhere

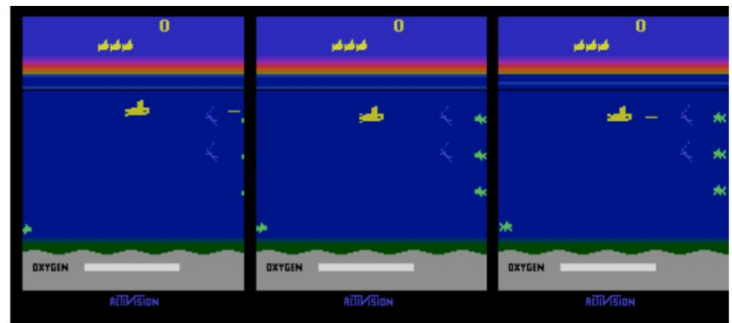


Images are examples of pose estimation, not actually from Toshev & Szegedy 2014. Copyright Lane McIntosh.

[Toshev, Szegedy 2014]

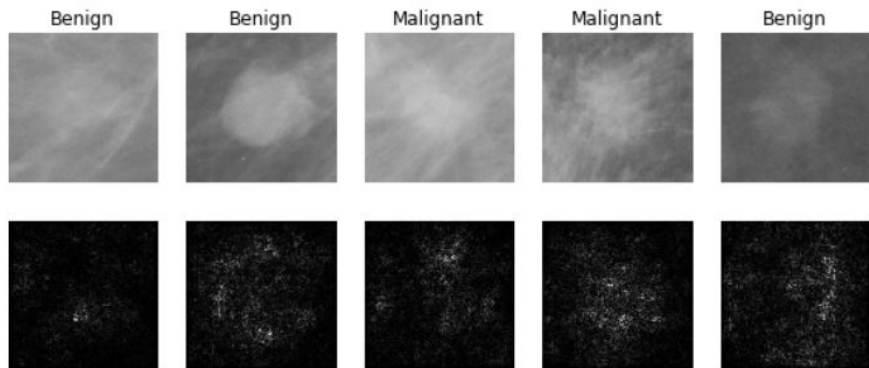


[Guo et al. 2014]



Figures copyright Xiaoxiao Guo, Satinder Singh, Honglak Lee, Richard Lewis, and Xiaoshi Wang, 2014. Reproduced with permission.

Fast-forward to today: ConvNets are everywhere



[Levy et al. 2016]

Figure copyright Levy et al. 2016.
Reproduced with permission.



[Dieleman et al. 2014]

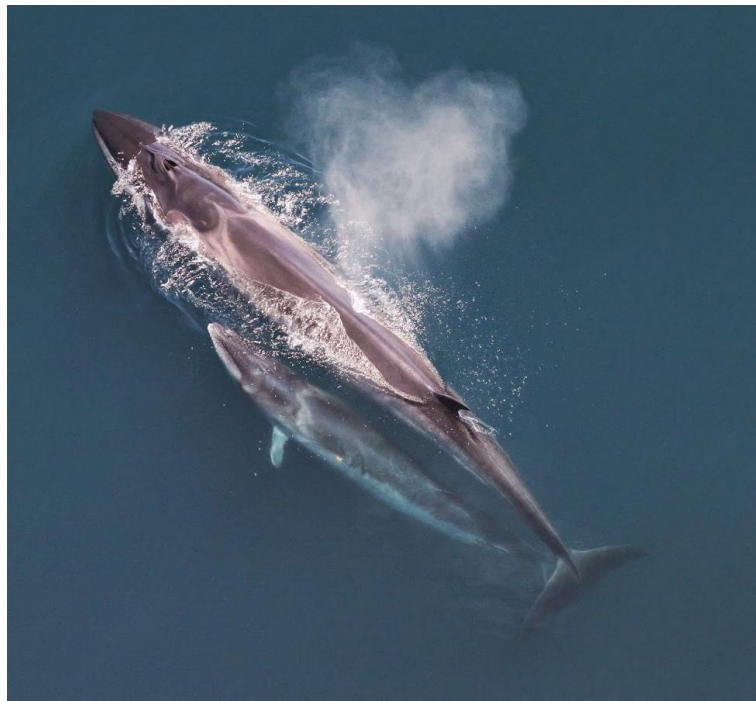
From left to right: [public domain by NASA](#), usage [permitted](#) by ESA/Hubble, [public domain by NASA](#), and [public domain](#).



[Sermanet et al. 2011]
[Ciresan et al.]

Photos by Lane McIntosh.
Copyright CS231n 2017.

[This image](#) by Christin Khan is in the public domain and originally came from the U.S. NOAA.



Whale recognition, Kaggle Challenge

Photo and figure by Lane McIntosh; not actual example from Mnih and Hinton, 2010 paper.



Mnih and Hinton, 2010

No errors



A white teddy bear sitting in the grass

Minor errors



A man in a baseball uniform throwing a ball

Somewhat related



A woman is holding a cat in her hand

Image Captioning

*[Vinyals et al., 2015]
[Karpathy and Fei-Fei, 2015]*



A man riding a wave on top of a surfboard



A cat sitting on a suitcase on the floor

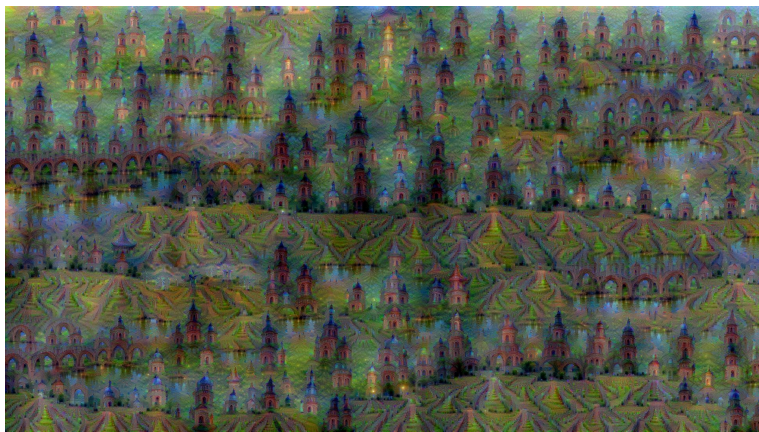
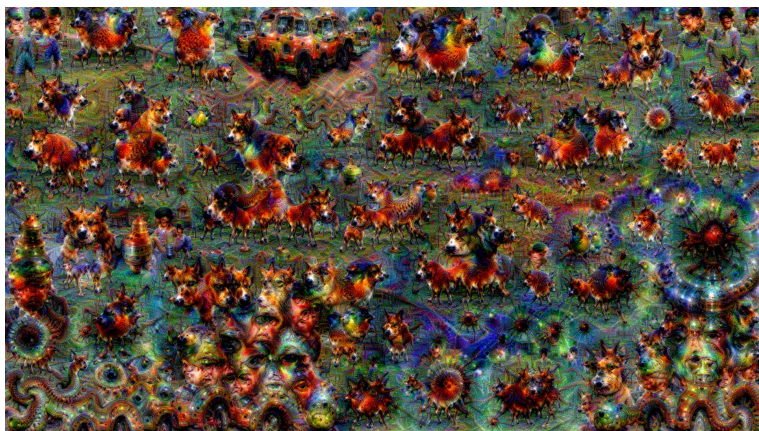


A woman standing on a beach holding a surfboard

All images are CC0 Public domain:

<https://pixabay.com/en/luggage-antique-cat-1643010/>
<https://pixabay.com/en/teddy-plush-bears-cute-teddy-bear-1623436/>
<https://pixabay.com/en/surf-wave-summer-sport-litoral-1668716/>
<https://pixabay.com/en/woman-female-model-portrait-adult-983967/>
<https://pixabay.com/en/handstand-lake-meditation-496008/>
<https://pixabay.com/en/baseball-player-shortstop-infield-1045263/>

Captions generated by Justin Johnson using [NeuralTalk2](#)



Figures copyright Justin Johnson, 2015. Reproduced with permission. Generated using the Inceptionism approach from a [blog post](#) by Google Research.



[Original image](#) is CC0 public domain
[Starry Night](#) and [Tree Roots](#) by Van Gogh are in the public domain
[Bokeh image](#) is in the public domain
 Stylized images copyright Justin Johnson, 2017;
 reproduced with permission



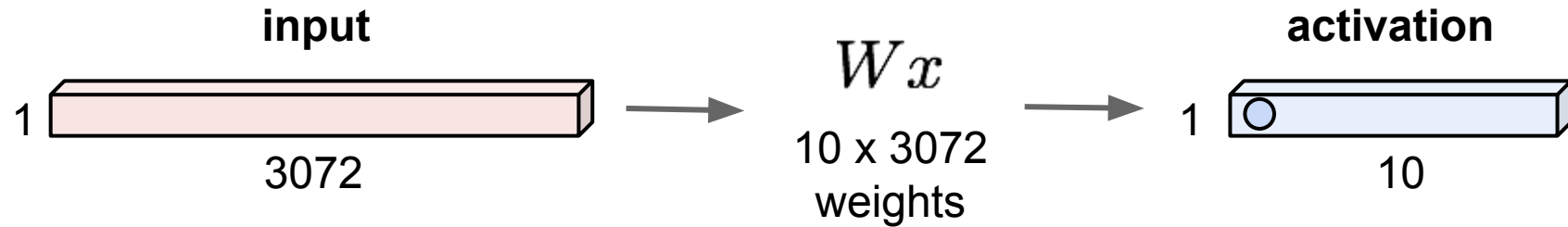
Gatys et al, "Image Style Transfer using Convolutional Neural Networks", CVPR 2016
 Gatys et al, "Controlling Perceptual Factors in Neural Style Transfer", CVPR 2017

Convolutional Neural Networks

(First without the brain stuff)

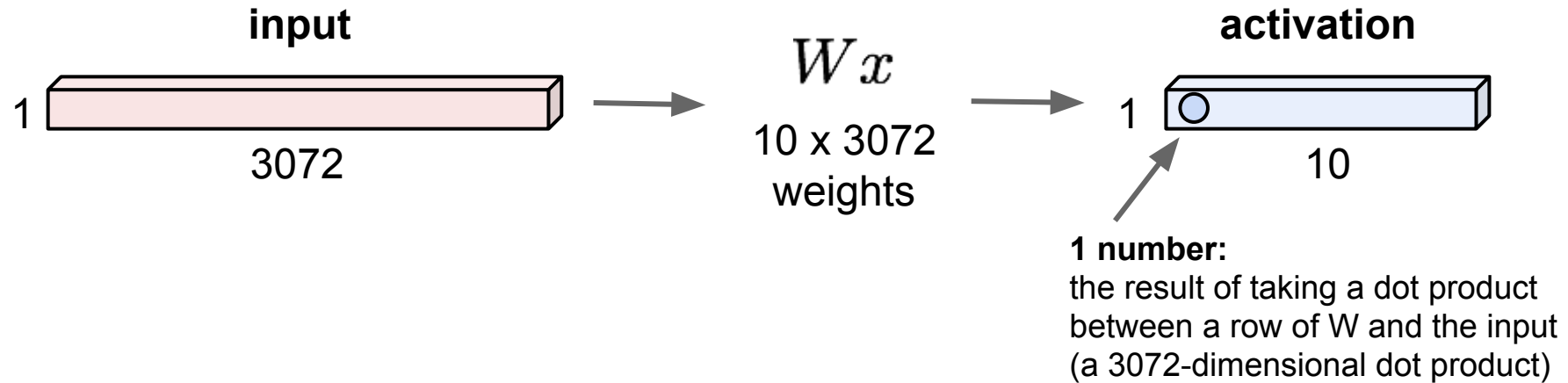
Fully Connected Layer

32x32x3 image -> stretch to 3072 x 1



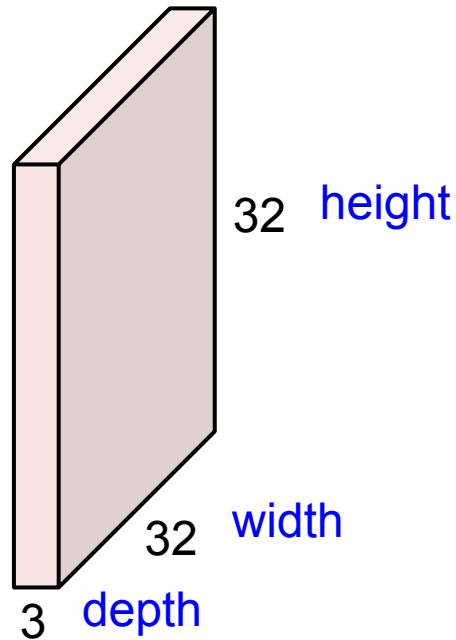
Fully Connected Layer

32x32x3 image -> stretch to 3072 x 1



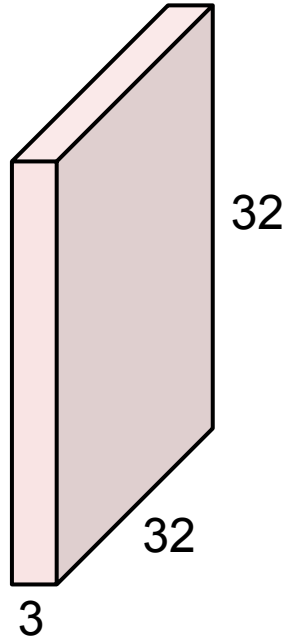
Convolution Layer

32x32x3 image \rightarrow preserve spatial structure



Convolution Layer

32x32x3 image



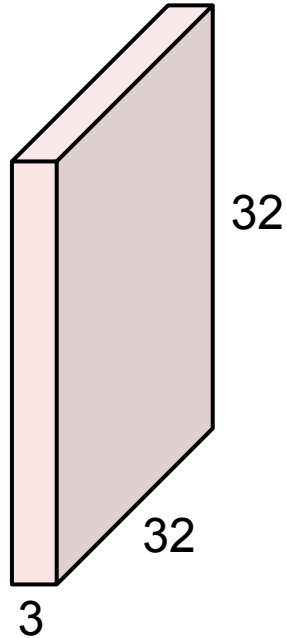
5x5x3 filter



Convolve the filter with the image
i.e. “slide over the image spatially,
computing dot products”

Convolution Layer

32x32x3 image



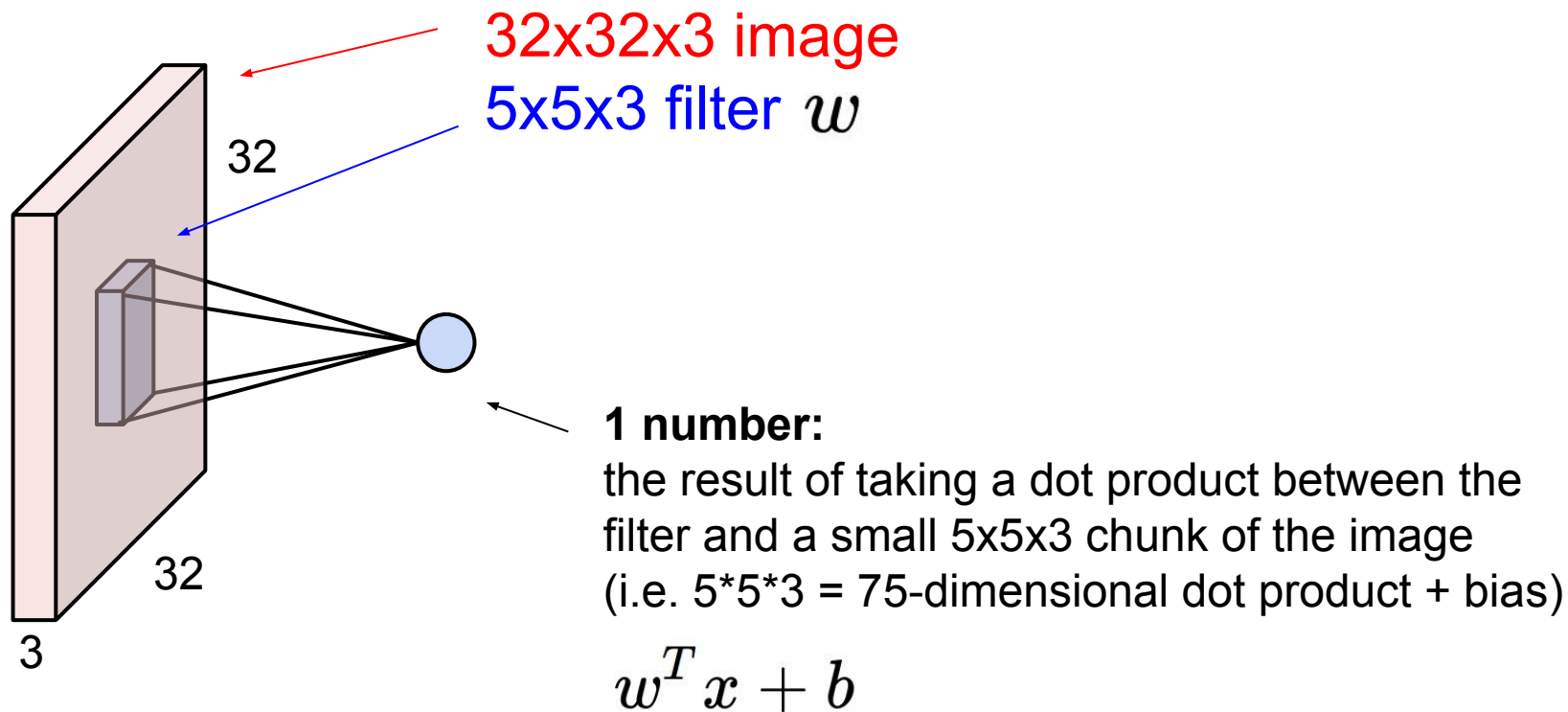
Filters always extend the full depth of the input volume

5x5x3 filter

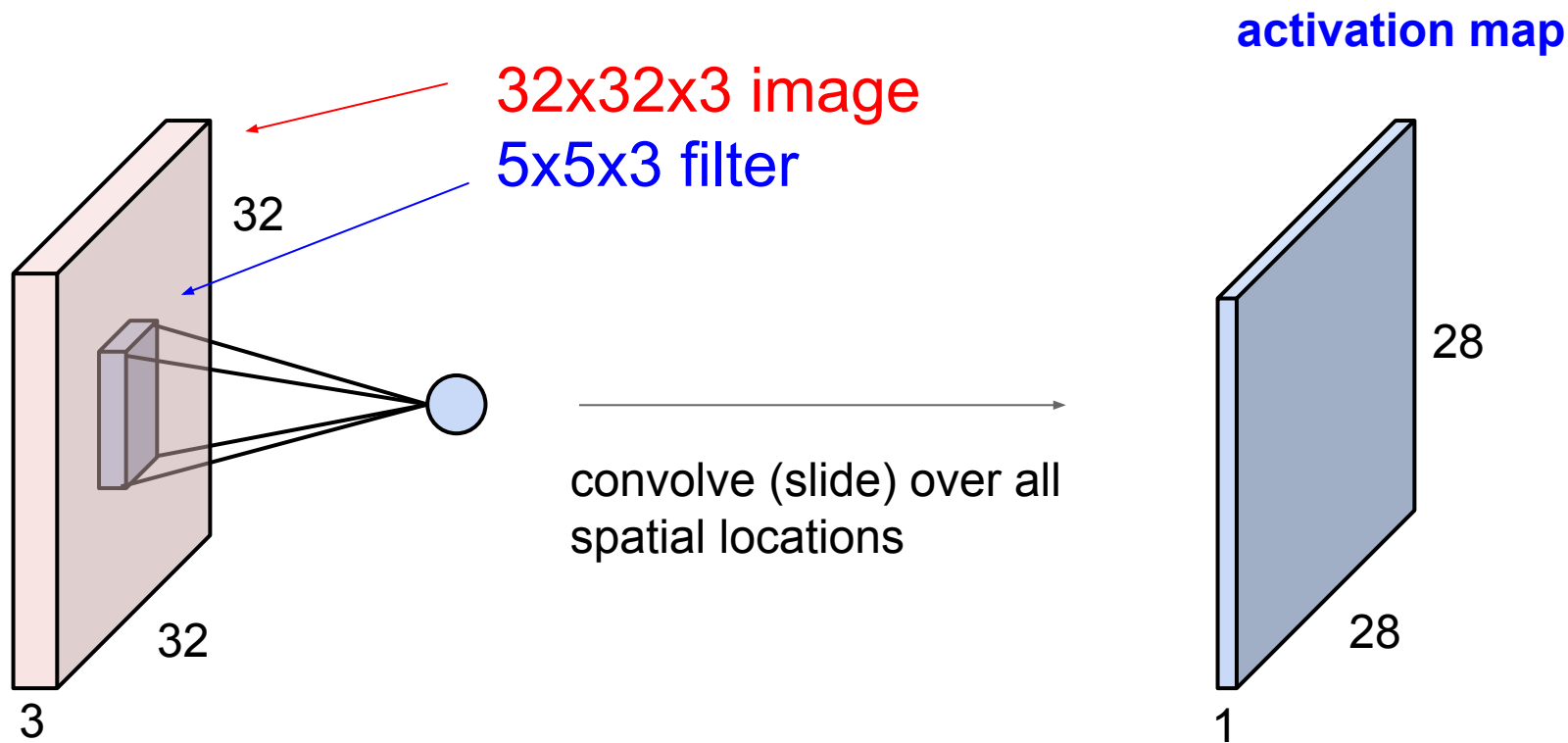


Convolve the filter with the image
i.e. “slide over the image spatially,
computing dot products”

Convolution Layer

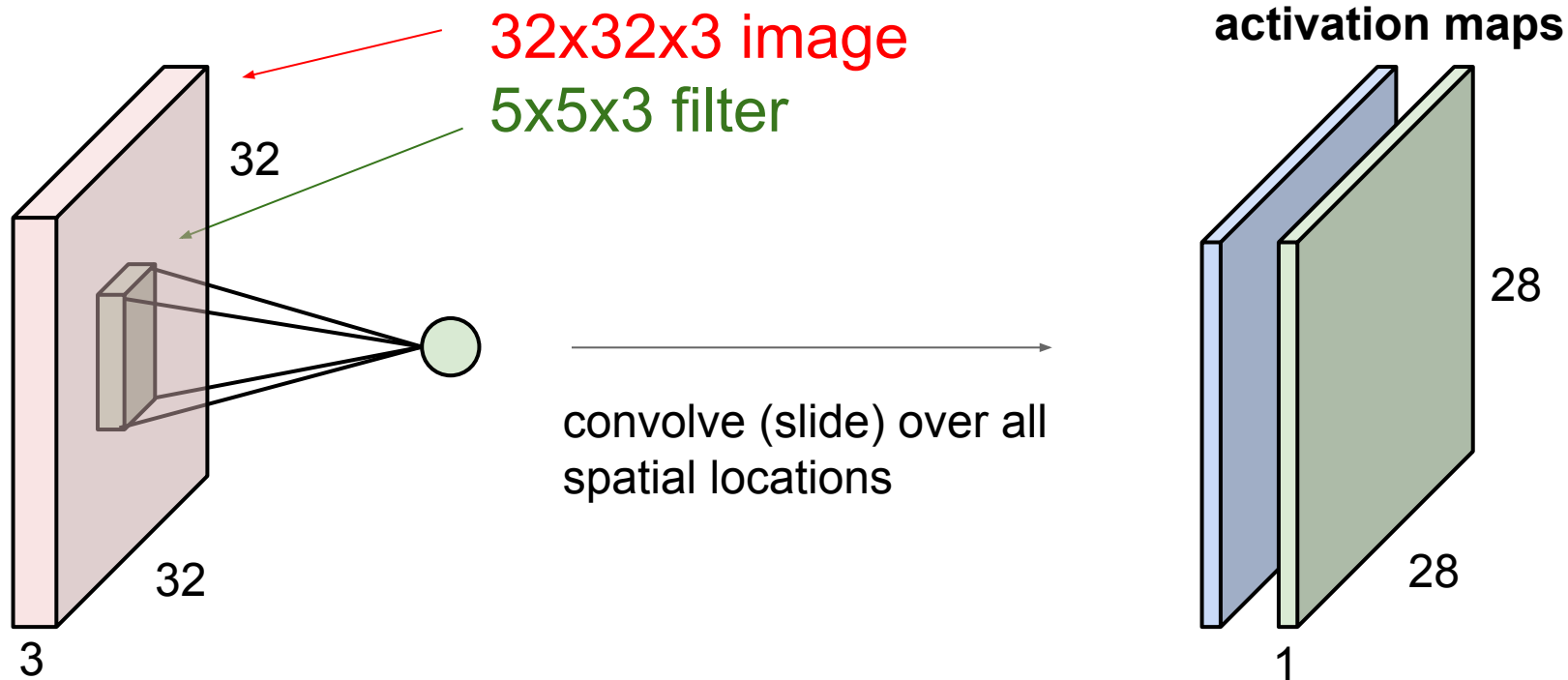


Convolution Layer

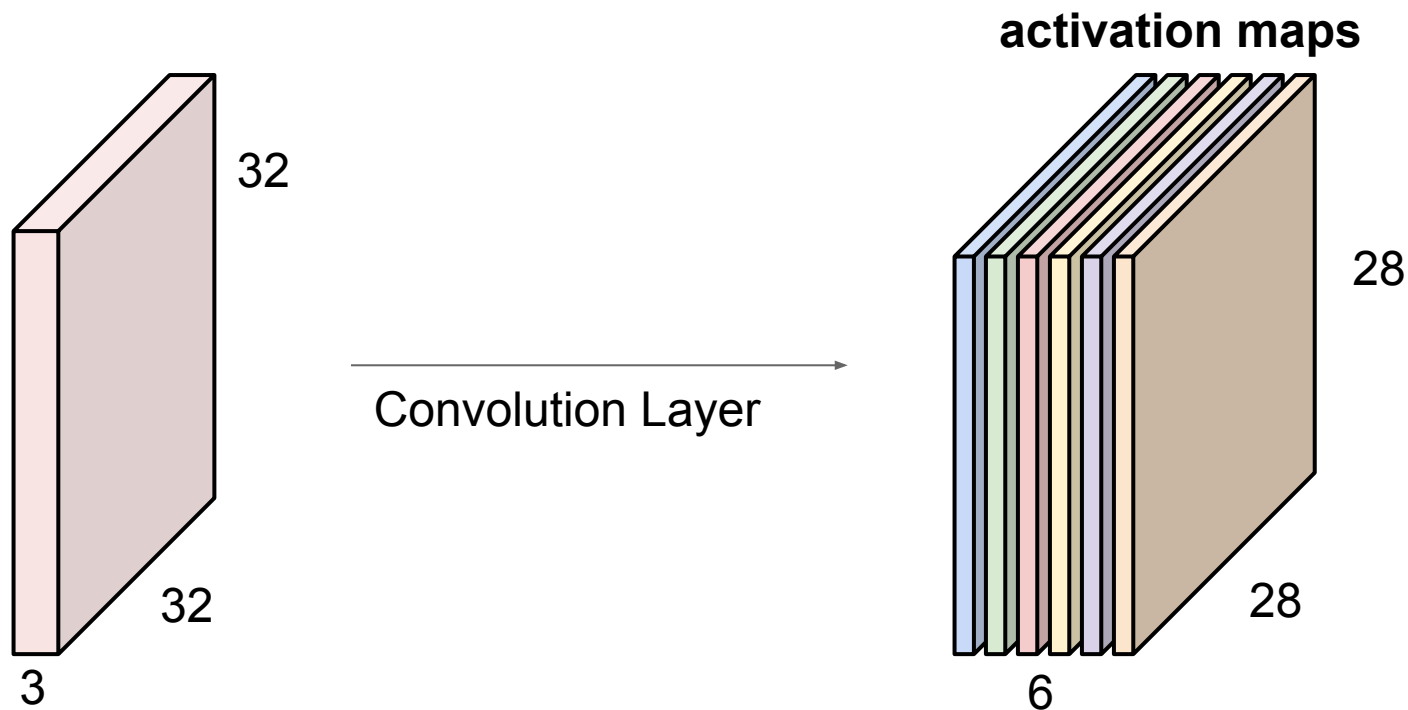


Convolution Layer

consider a second, **green** filter

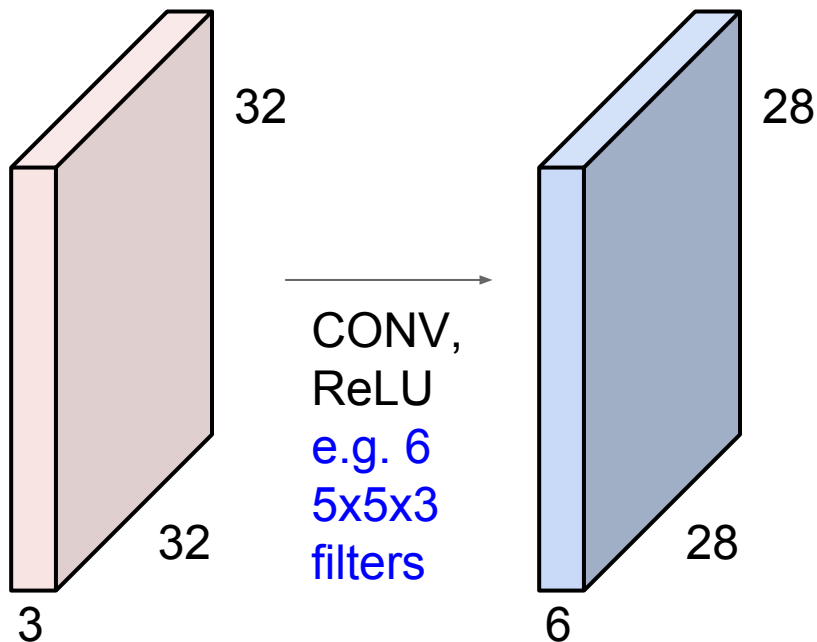


For example, if we had 6 5x5 filters, we'll get 6 separate activation maps:

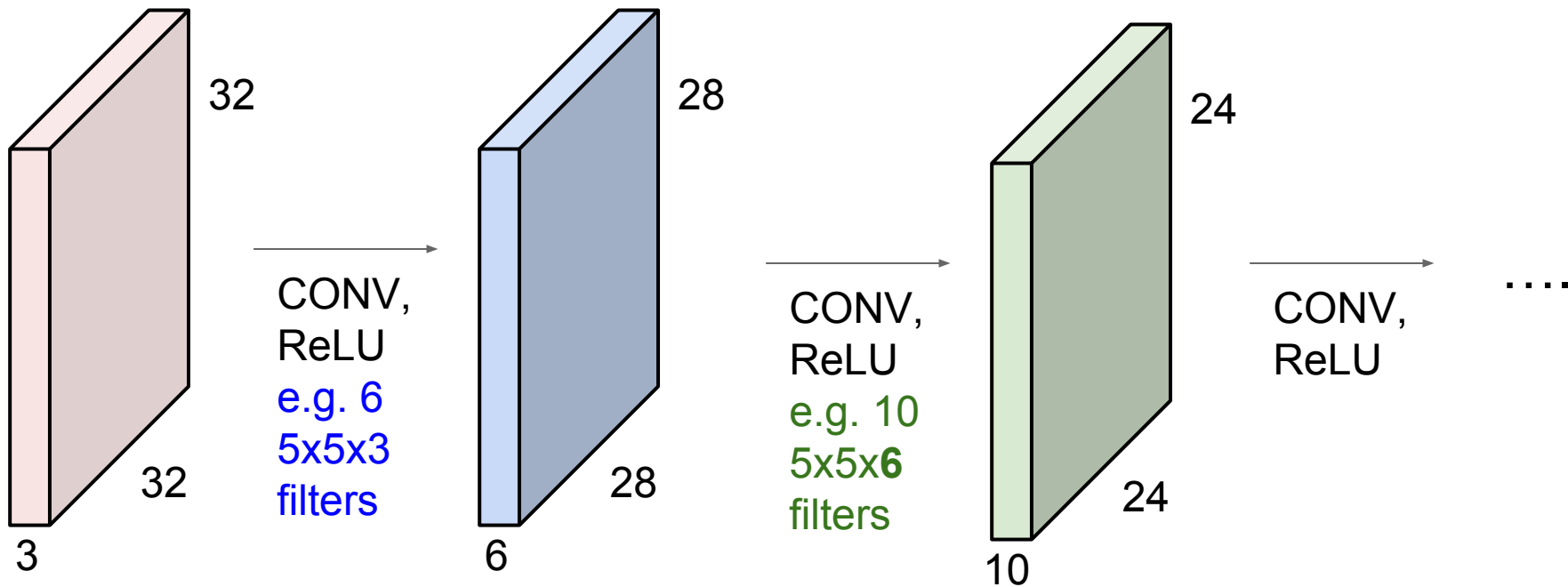


We stack these up to get a “new image” of size 28x28x6!

Preview: ConvNet is a sequence of Convolution Layers, interspersed with activation functions



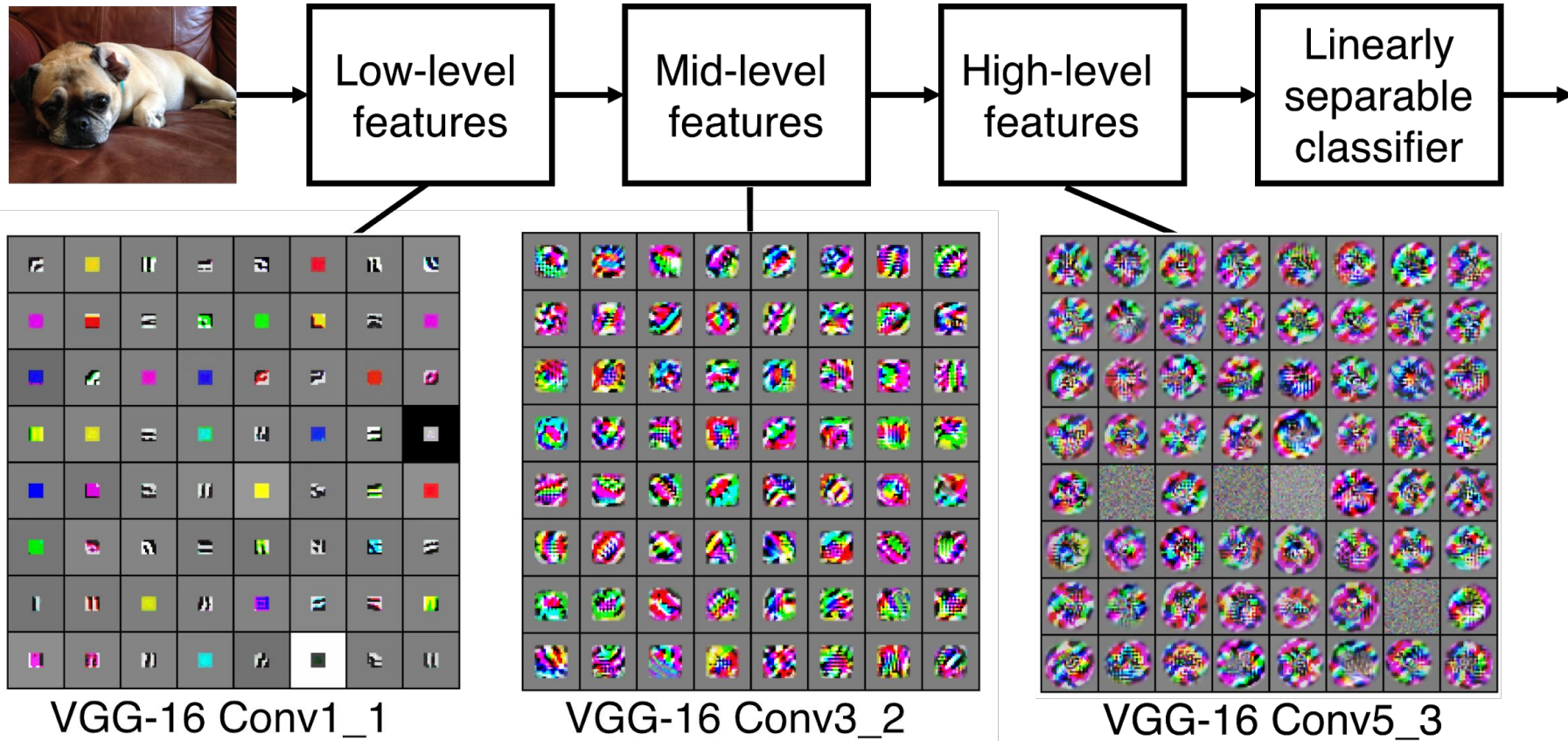
Preview: ConvNet is a sequence of Convolution Layers, interspersed with activation functions



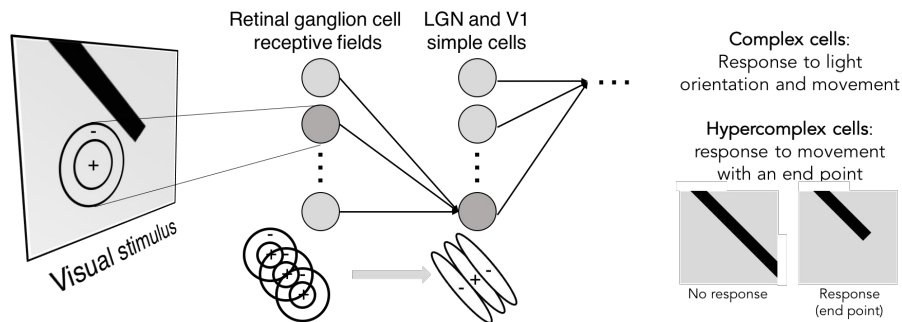
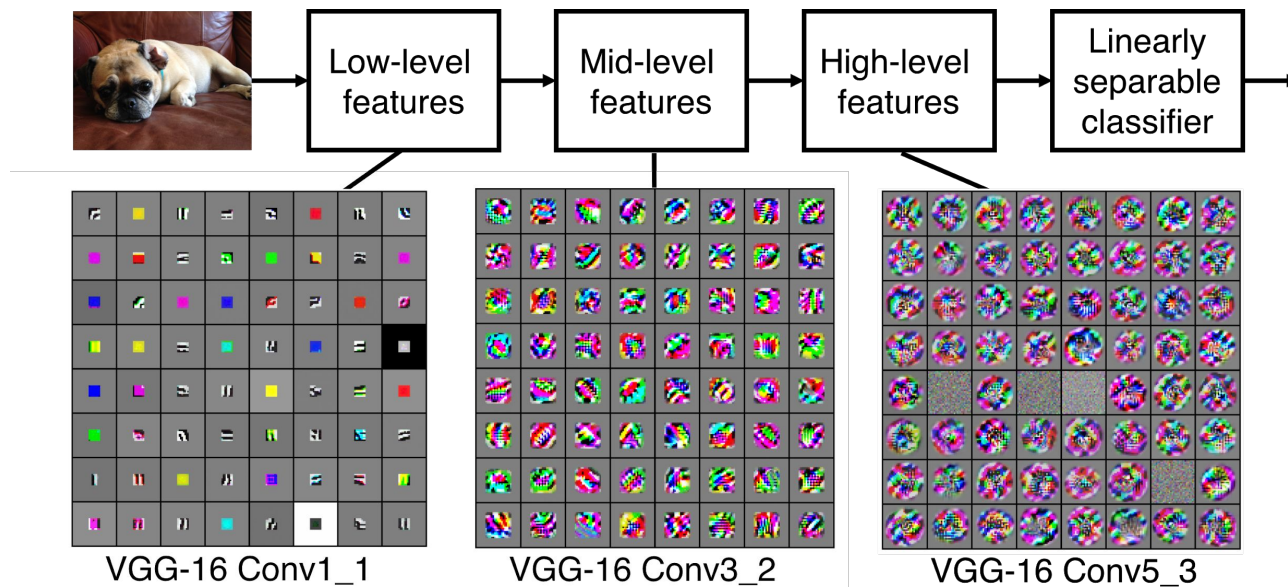
Preview

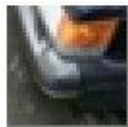
[Zeiler and Fergus 2013]

Visualization of VGG-16 by Lane McIntosh. VGG-16 architecture from [Simonyan and Zisserman 2014].



Preview





one filter =>
one activation map

example 5x5 filters
(32 total)

Activations:

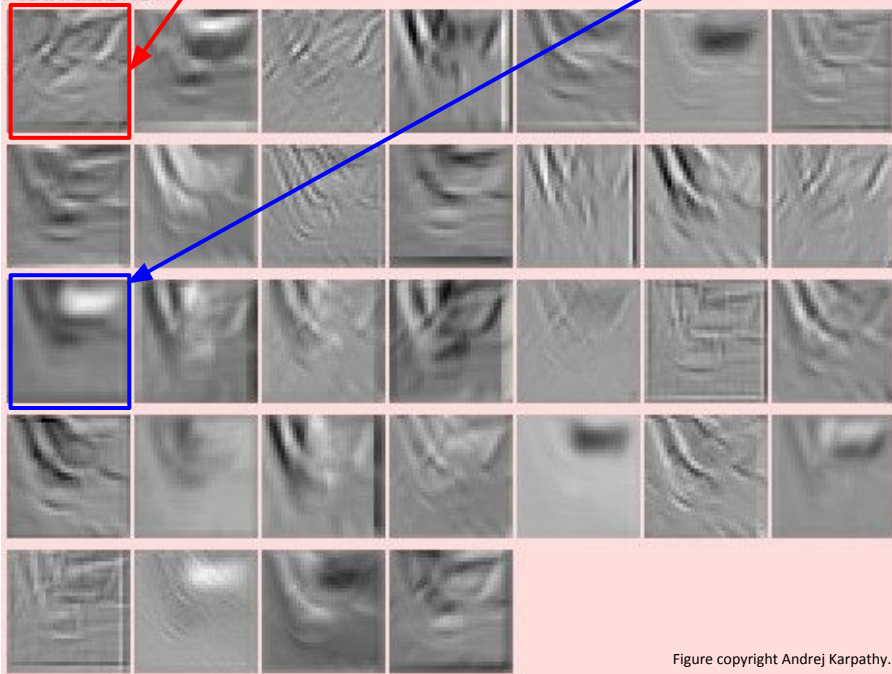


Figure copyright Andrej Karpathy.

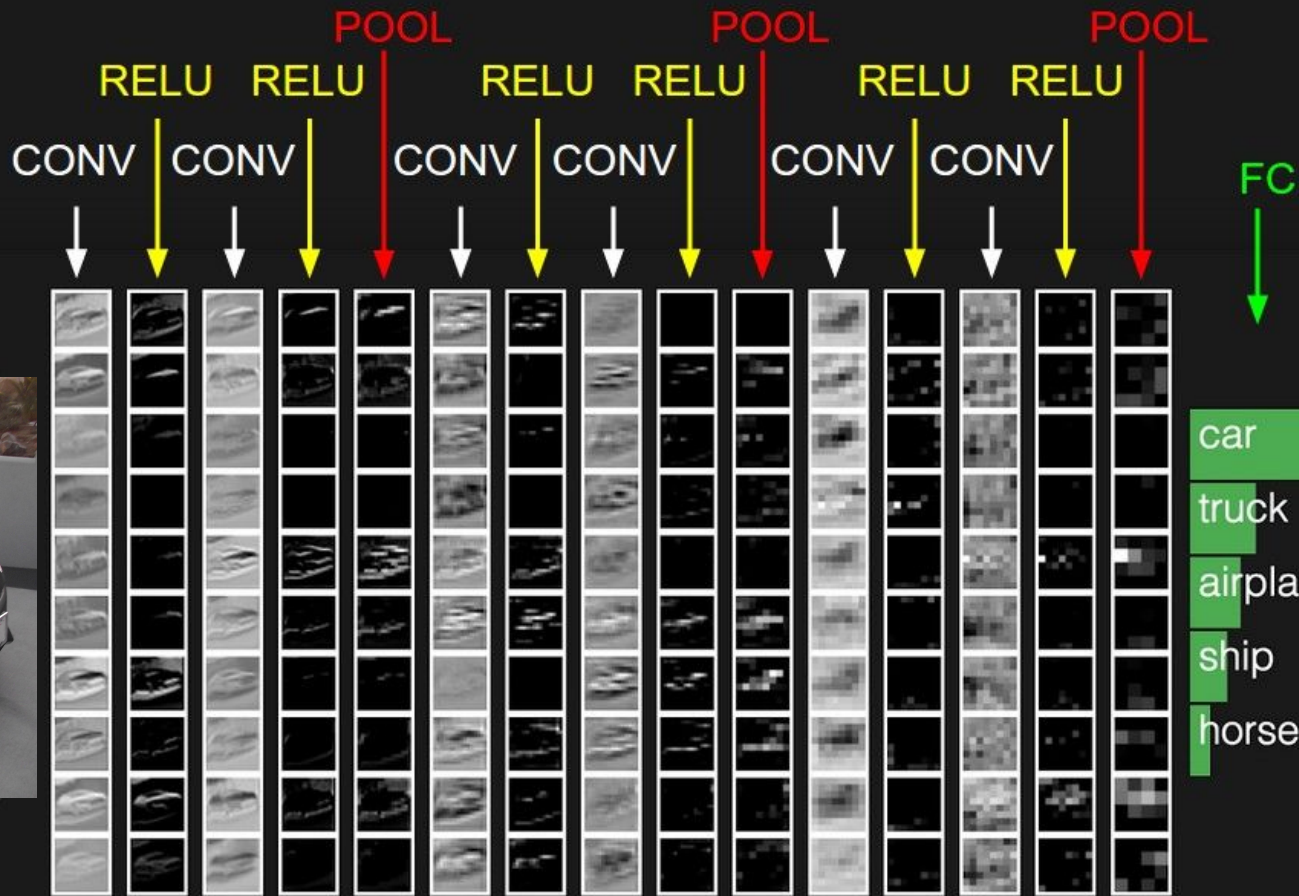
We call the layer convolutional
because it is related to convolution
of two signals:

$$f[x,y] * g[x,y] = \sum_{n_1=-\infty}^{\infty} \sum_{n_2=-\infty}^{\infty} f[n_1,n_2] \cdot g[x-n_1,y-n_2]$$

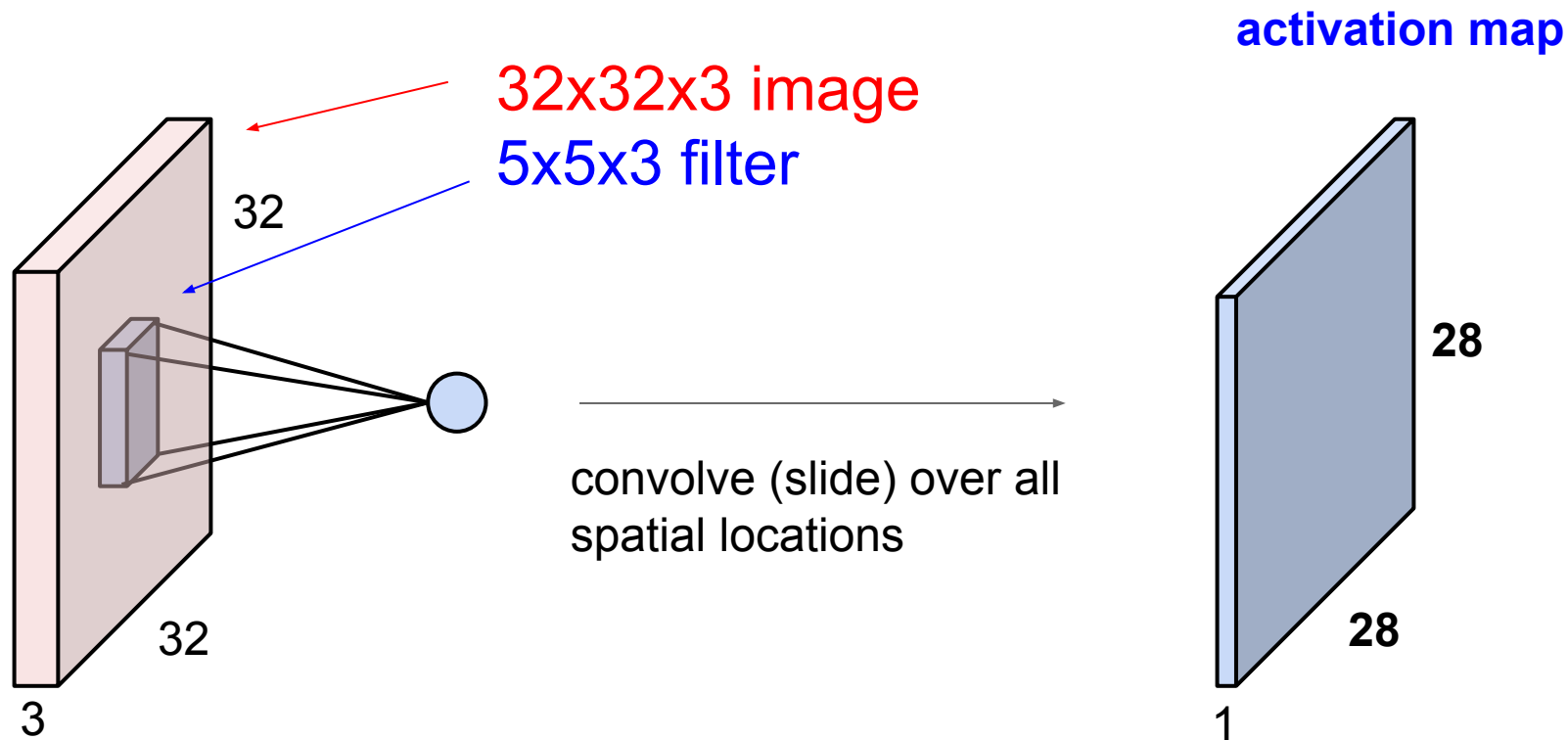


elementwise multiplication and sum of
a filter and the signal (image)

A black Mazda3 is shown from a front-three-quarter perspective, parked on a light-colored paved surface. The car is positioned in front of a low, light-colored concrete wall. Behind the wall, there is a landscaped area with rocks and some dry, brownish vegetation. In the far background, a hilly landscape with some buildings and a clear sky is visible under bright, natural light.

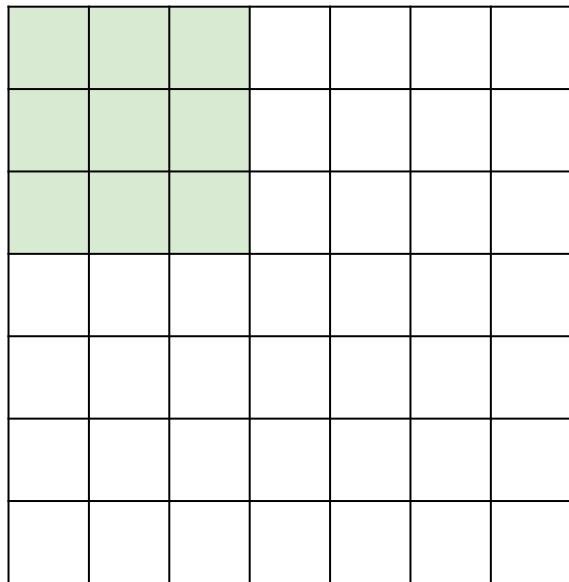


A closer look at spatial dimensions:



A closer look at spatial dimensions:

7

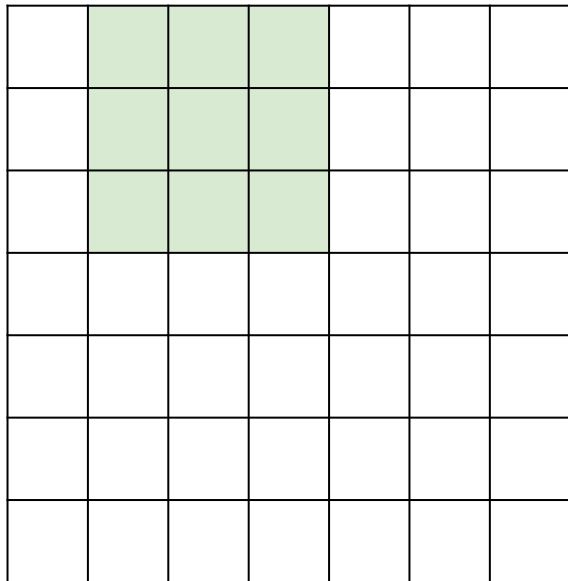


7

7x7 input (spatially)
assume 3x3 filter

A closer look at spatial dimensions:

7

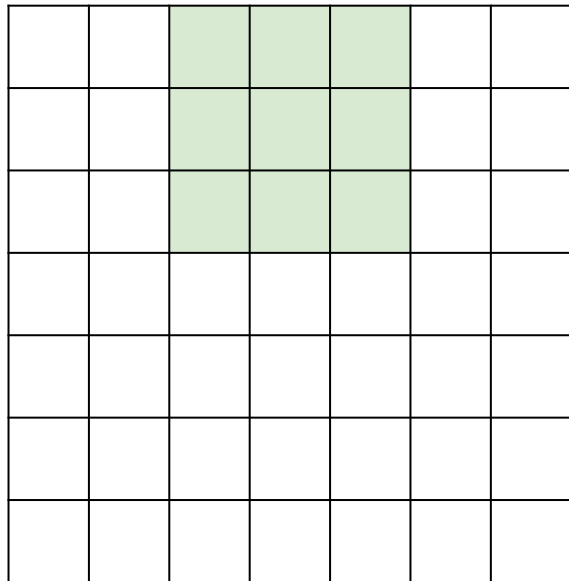


7

7x7 input (spatially)
assume 3x3 filter

A closer look at spatial dimensions:

7

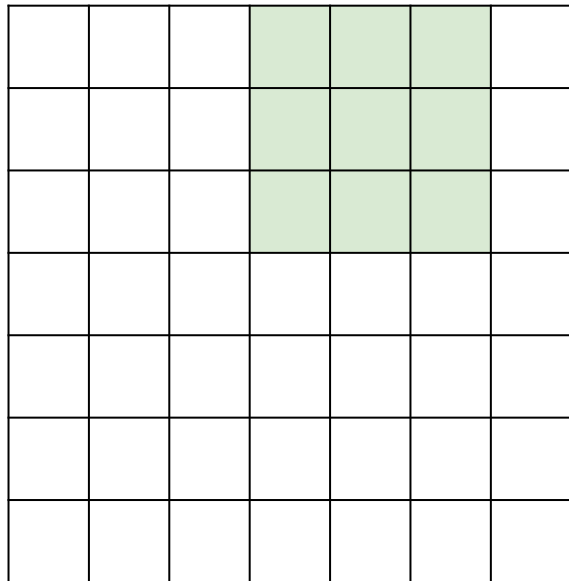


7x7 input (spatially)
assume 3x3 filter

7

A closer look at spatial dimensions:

7



7

7x7 input (spatially)
assume 3x3 filter

A closer look at spatial dimensions:

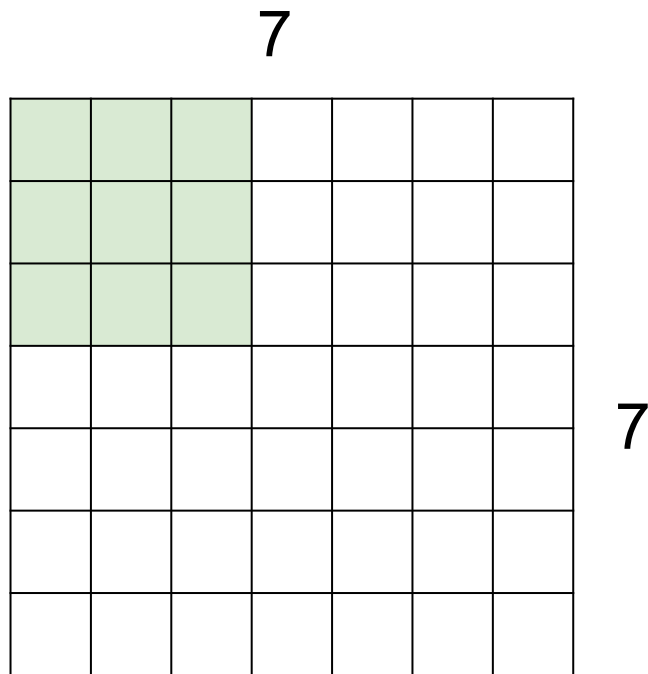
7

7

7x7 input (spatially)
assume 3x3 filter

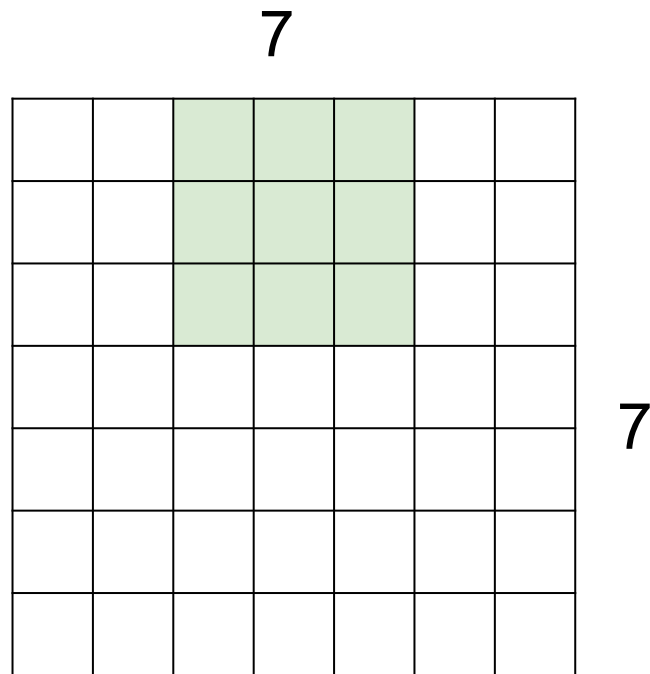
=> 5x5 output

A closer look at spatial dimensions:



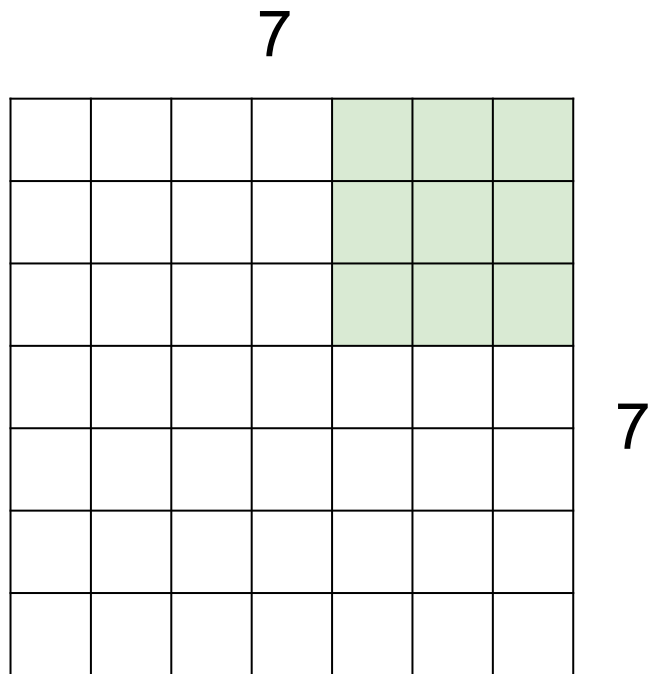
7x7 input (spatially)
assume 3x3 filter
applied **with stride 2**

A closer look at spatial dimensions:



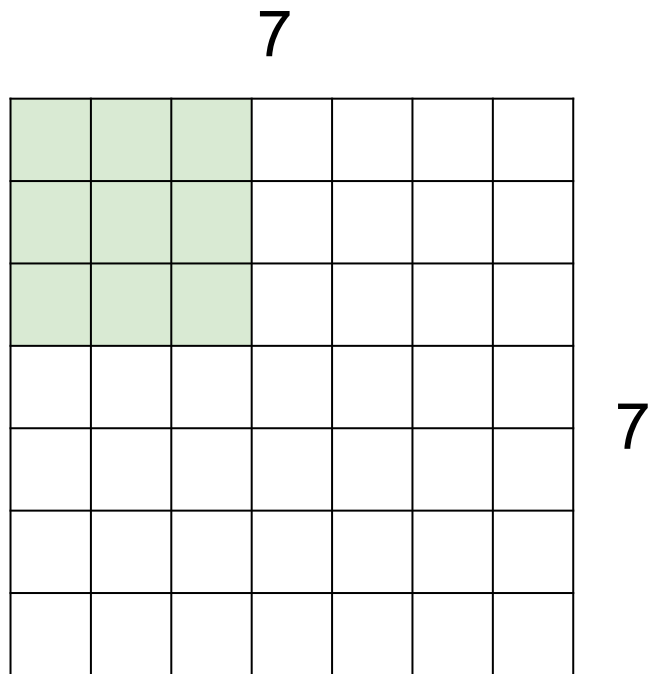
7x7 input (spatially)
assume 3x3 filter
applied **with stride 2**

A closer look at spatial dimensions:



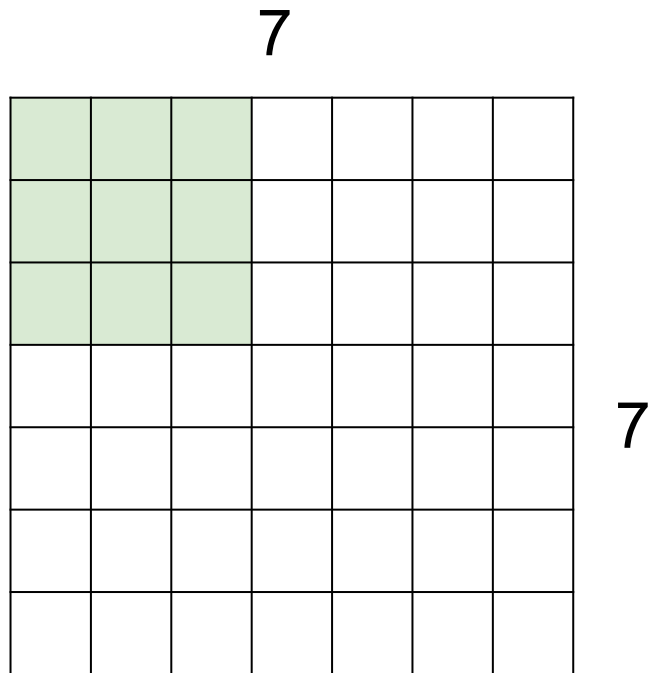
7x7 input (spatially)
assume 3x3 filter
applied **with stride 2**
=> 3x3 output!

A closer look at spatial dimensions:



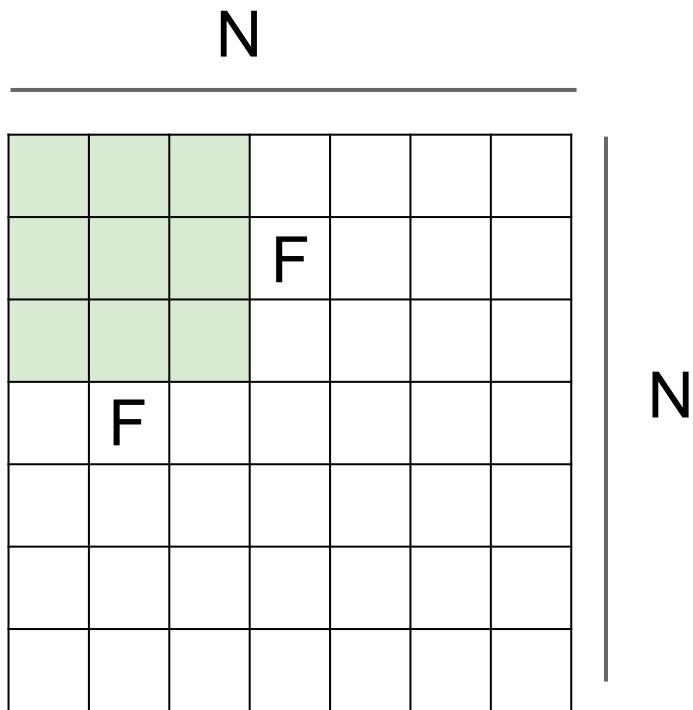
7x7 input (spatially)
assume 3x3 filter
applied **with stride 3?**

A closer look at spatial dimensions:



7x7 input (spatially)
assume 3x3 filter
applied **with stride 3**?

doesn't fit!
cannot apply 3x3 filter on
7x7 input with stride 3.



Output size:
 $(N - F) / \text{stride} + 1$

e.g. $N = 7, F = 3$:

stride 1 $\Rightarrow (7 - 3)/1 + 1 = 5$

stride 2 $\Rightarrow (7 - 3)/2 + 1 = 3$

stride 3 $\Rightarrow (7 - 3)/3 + 1 = 2.33 \therefore \backslash$

In practice: Common to zero pad the border

0	0	0	0	0	0			
0								
0								
0								
0								

e.g. input 7x7

3x3 filter, applied with **stride 1**

pad with 1 pixel border => what is the output?

(recall:)

$$(N - F) / \text{stride} + 1$$

In practice: Common to zero pad the border

0	0	0	0	0	0			
0								
0								
0								
0								

e.g. input 7x7

3x3 filter, applied with **stride 1**

pad with 1 pixel border => what is the output?

7x7 output!

In practice: Common to zero pad the border

0	0	0	0	0	0			
0								
0								
0								
0								

e.g. input 7x7

3x3 filter, applied with **stride 1**

pad with 1 pixel border => what is the output?

7x7 output!

in general, common to see CONV layers with stride 1, filters of size $F \times F$, and zero-padding with $(F-1)/2$. (will preserve size spatially)

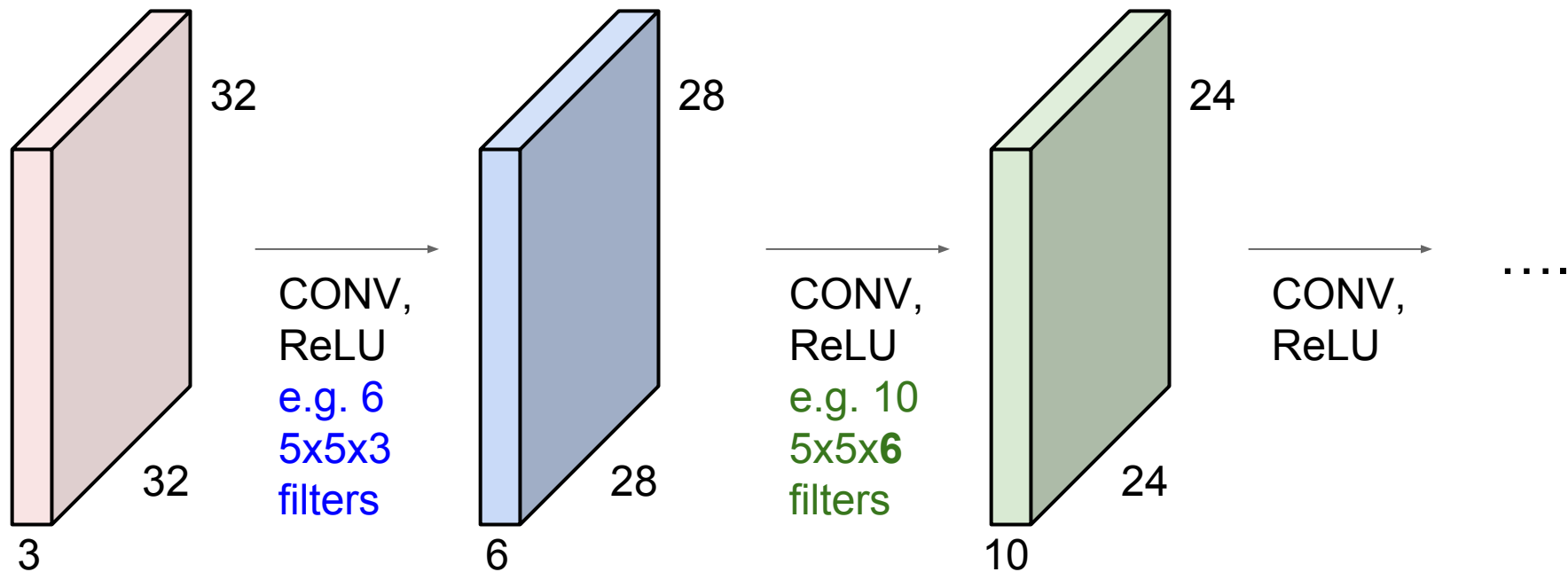
e.g. $F = 3 \Rightarrow$ zero pad with 1

$F = 5 \Rightarrow$ zero pad with 2

$F = 7 \Rightarrow$ zero pad with 3

Remember back to...

E.g. 32x32 input convolved repeatedly with 5x5 filters shrinks volumes spatially! (32 \rightarrow 28 \rightarrow 24 ...). Shrinking too fast is not good, doesn't work well.

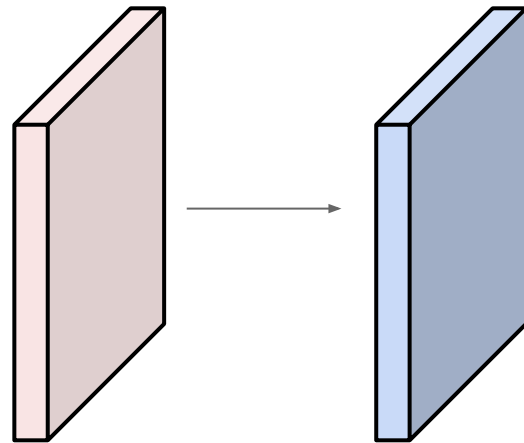


Examples time:

Input volume: **32x32x3**

10 5x5 filters with stride 1, pad 2

Output volume size: ?



Examples time:

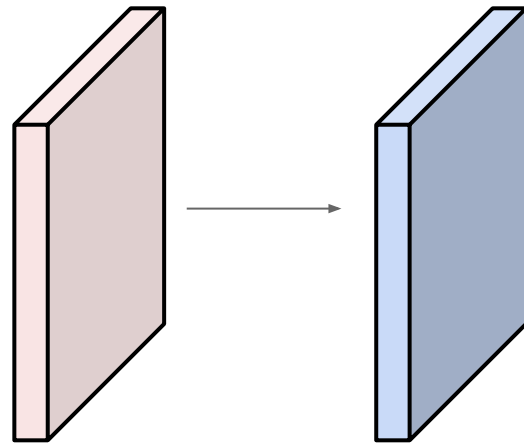
Input volume: **32x32x3**

10 **5x5** filters with stride **1**, pad **2**

Output volume size:

$(32 + 2 * 2 - 5) / 1 + 1 = 32$ spatially, so

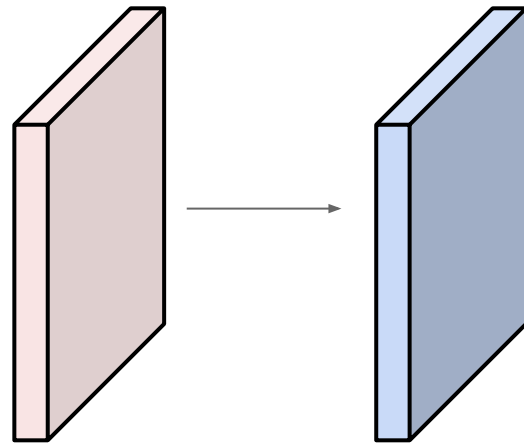
32x32x10



Examples time:

Input volume: **32x32x3**

10 5x5 filters with stride 1, pad 2

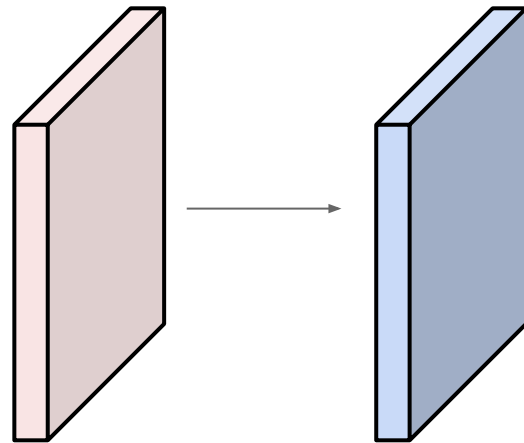


Number of parameters in this layer?

Examples time:

Input volume: **32x32x3**

10 **5x5** filters with stride 1, pad 2



Number of parameters in this layer?

each filter has $5*5*3 + 1 = 76$ params (+1 for bias)

=> $76*10 = 760$

Summary. To summarize, the Conv Layer:

- Accepts a volume of size $W_1 \times H_1 \times D_1$
- Requires four hyperparameters:
 - Number of filters K ,
 - their spatial extent F ,
 - the stride S ,
 - the amount of zero padding P .
- Produces a volume of size $W_2 \times H_2 \times D_2$ where:
 - $W_2 = (W_1 - F + 2P)/S + 1$
 - $H_2 = (H_1 - F + 2P)/S + 1$ (i.e. width and height are computed equally by symmetry)
 - $D_2 = K$
- With parameter sharing, it introduces $F \cdot F \cdot D_1$ weights per filter, for a total of $(F \cdot F \cdot D_1) \cdot K$ weights and K biases.
- In the output volume, the d -th depth slice (of size $W_2 \times H_2$) is the result of performing a valid convolution of the d -th filter over the input volume with a stride of S , and then offset by d -th bias.

Common settings:

Summary. To summarize, the Conv Layer:

- Accepts a volume of size $W_1 \times H_1 \times D_1$
- Requires four hyperparameters:
 - Number of filters K ,
 - their spatial extent F ,
 - the stride S ,
 - the amount of zero padding P .
- Produces a volume of size $W_2 \times H_2 \times D_2$ where:
 - $W_2 = (W_1 - F + 2P)/S + 1$
 - $H_2 = (H_1 - F + 2P)/S + 1$ (i.e. width and height are computed equally by symmetry)
 - $D_2 = K$
- With parameter sharing, it introduces $F \cdot F \cdot D_1$ weights per filter, for a total of $(F \cdot F \cdot D_1) \cdot K$ weights and K biases.
- In the output volume, the d -th depth slice (of size $W_2 \times H_2$) is the result of performing a valid convolution of the d -th filter over the input volume with a stride of S , and then offset by d -th bias.

$K = (\text{powers of 2, e.g. 32, 64, 128, 512})$

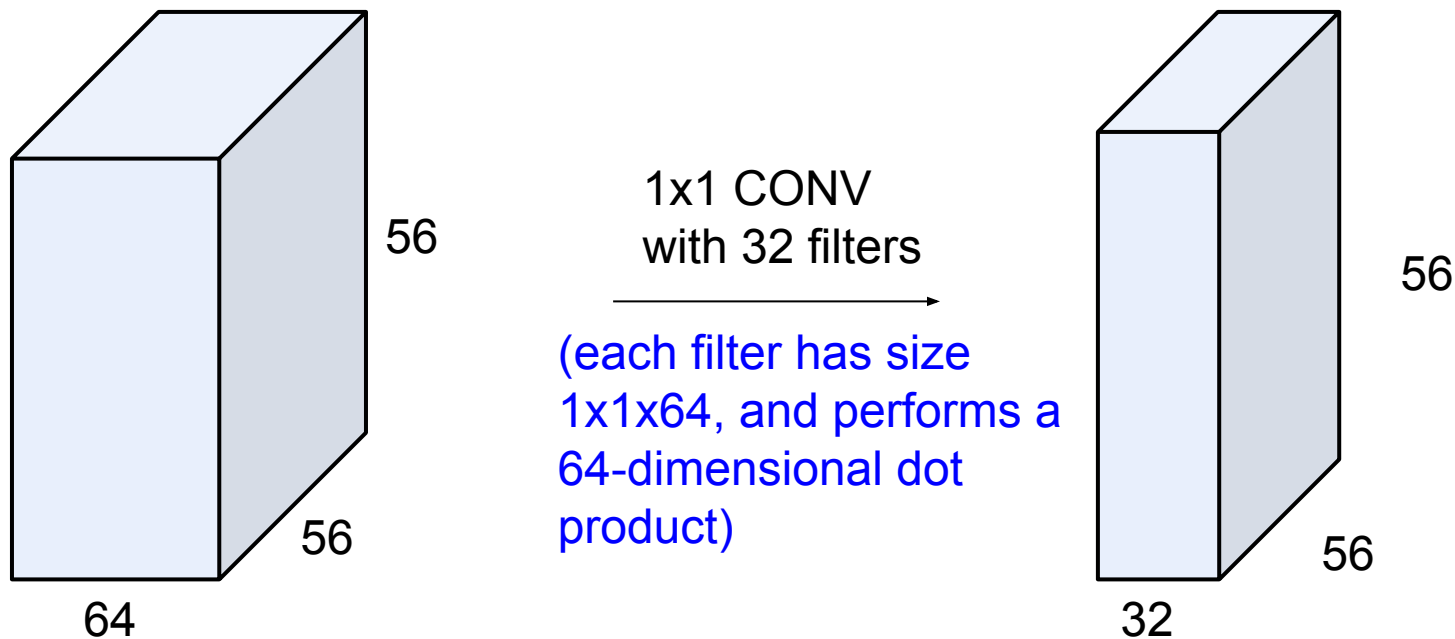
- $F = 3, S = 1, P = 1$

- $F = 5, S = 1, P = 2$

- $F = 5, S = 2, P = ?$ (whatever fits)

- $F = 1, S = 1, P = 0$

(btw, 1x1 convolution layers make perfect sense)



Example: CONV layer in PyTorch

Conv2d

```
CLASS torch.nn.Conv2d(in_channels, out_channels, kernel_size, stride=1, padding=0, dilation=1, groups=1, bias=True)
```

[SOURCE]

Applies a 2D convolution over an input signal composed of several input planes.

In the simplest case, the output value of the layer with input size (N, C_{in}, H, W) and output $(N, C_{out}, H_{out}, W_{out})$ can be precisely described as:

$$\text{out}(N_i, C_{out,j}) = \text{bias}(C_{out,j}) + \sum_{k=0}^{C_{in}-1} \text{weight}(C_{out,j}, k) \star \text{input}(N_i, k)$$

where \star is the valid 2D **cross-correlation** operator, N is a batch size, C denotes a number of channels, H is a height of input planes in pixels, and W is width in pixels.

- `stride` controls the stride for the cross-correlation, a single number or a tuple.
- `padding` controls the amount of implicit zero-paddings on both sides for `padding` number of points for each dimension.
- `dilation` controls the spacing between the kernel points; also known as the à trous algorithm. It is harder to describe, but this [link](#) has a nice visualization of what `dilation` does.
- `groups` controls the connections between inputs and outputs. `in_channels` and `out_channels` must both be divisible by `groups`. For example,
 - At `groups=1`, all inputs are convolved to all outputs.
 - At `groups=2`, the operation becomes equivalent to having two conv layers side by side, each seeing half the input channels, and producing half the output channels, and both subsequently concatenated.
 - At `groups= in_channels`, each input channel is convolved with its own set of filters, of size: $\left\lfloor \frac{C_{out}}{C_{in}} \right\rfloor$.

The parameters `kernel_size`, `stride`, `padding`, `dilation` can either be:

- a single `int` – in which case the same value is used for the height and width dimension
- a `tuple` of two ints – in which case, the first `int` is used for the height dimension, and the second `int` for the width dimension

Summary. To summarize, the Conv Layer:

- Accepts a volume of size $W_1 \times H_1 \times D_1$
- Requires four hyperparameters:
 - Number of filters K ,
 - their spatial extent F ,
 - the stride S ,
 - the amount of zero padding P .

PyTorch is licensed under [BSD 3-clause](#).

Example: CONV layer in Keras

Summary. To summarize, the Conv Layer:

- Accepts a volume of size $W_1 \times H_1 \times D_1$
- Requires four hyperparameters:
 - Number of filters K ,
 - their spatial extent F ,
 - the stride S ,
 - the amount of zero padding P .

Conv2D

[\[source\]](#)

```
keras.layers.Conv2D(filters, kernel_size, strides=(1, 1), padding='valid', data_format=None, d:
```

2D convolution layer (e.g. spatial convolution over images).

This layer creates a convolution kernel that is convolved with the layer input to produce a tensor of outputs. If `use_bias` is True, a bias vector is created and added to the outputs. Finally, if `activation` is not `None`, it is applied to the outputs as well.

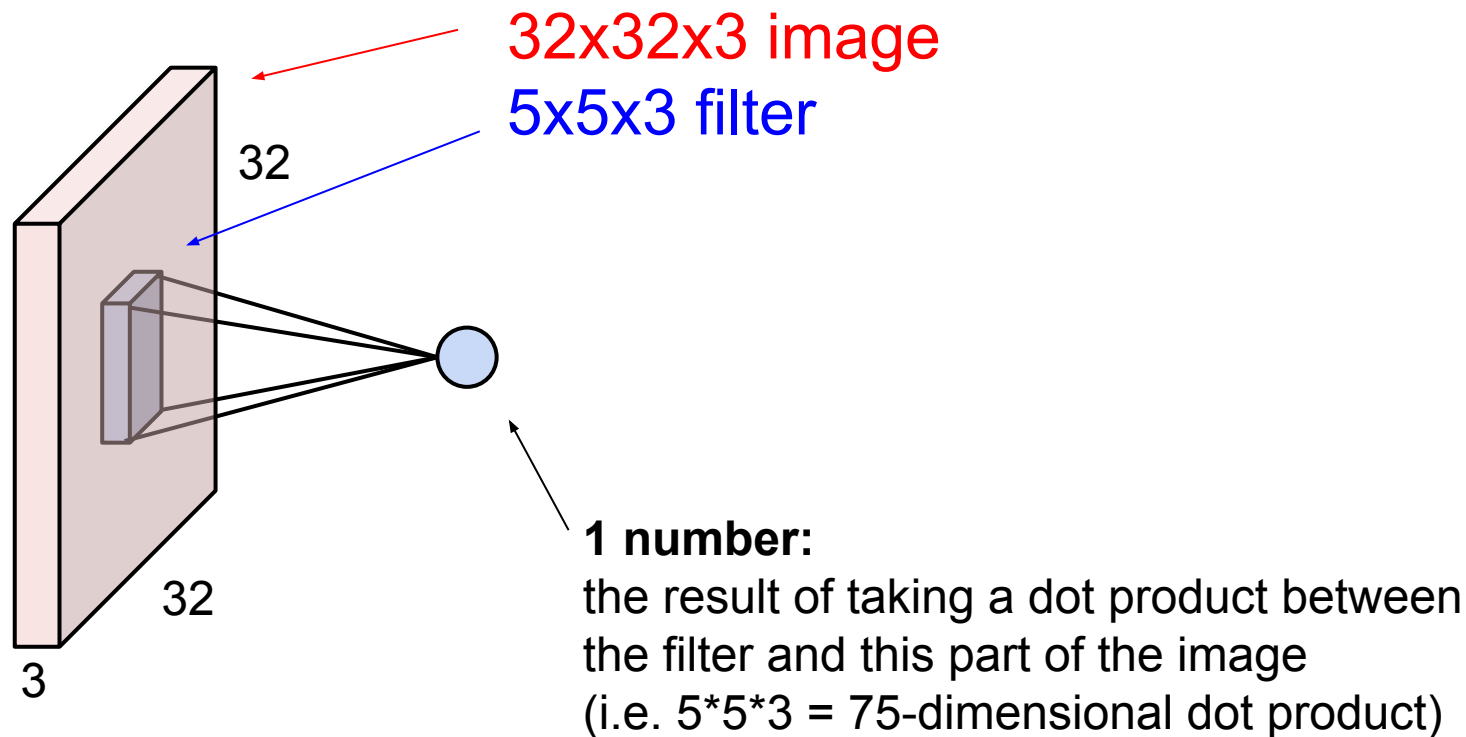
When using this layer as the first layer in a model, provide the keyword argument `input_shape` (tuple of integers, does not include the batch axis), e.g. `input_shape=(128, 128, 3)` for 128x128 RGB pictures in `data_format="channels_last"`.

Arguments

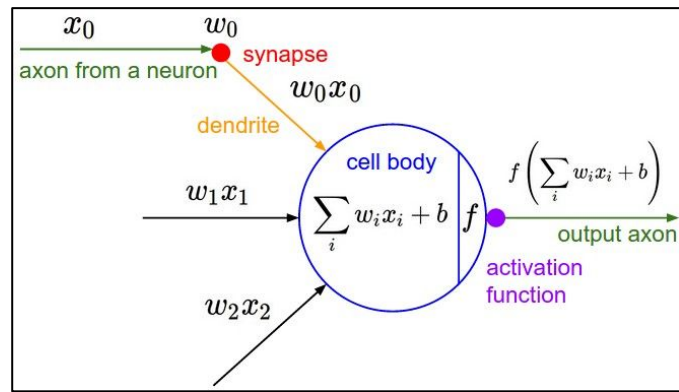
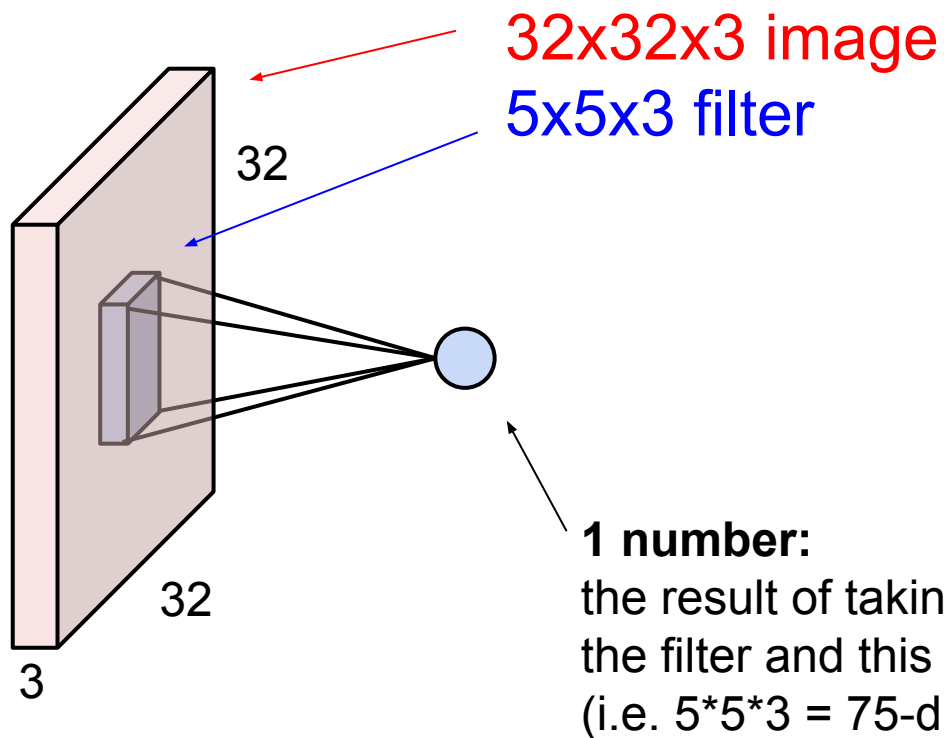
- **filters:** Integer, the dimensionality of the output space (i.e. the number of output filters in the convolution).
- **kernel_size:** An integer or tuple/list of 2 integers, specifying the height and width of the 2D convolution window. Can be a single integer to specify the same value for all spatial dimensions.
- **strides:** An integer or tuple/list of 2 integers, specifying the strides of the convolution along the height and width. Can be a single integer to specify the same value for all spatial dimensions. Specifying any stride value $\neq 1$ is incompatible with specifying any `dilation_rate` value $\neq 1$.
- **padding:** one of `"valid"` or `"same"` (case-insensitive). Note that `"same"` is slightly inconsistent across backends with `strides != 1`, as described [here](#)
- **data_format:** A string, one of `"channels_last"` or `"channels_first"`. The ordering of the dimensions in the inputs. `"channels_last"` corresponds to inputs with shape `(batch, height, width, channels)` while `"channels_first"` corresponds to inputs with shape `(batch, channels, height, width)`. It defaults to the `image_data_format` value found in your Keras config file at `~/keras/keras.json`. If you never set it, then it will be `"channels_last"`.

[Keras](#) is licensed under the [MIT license](#).

The brain/neuron view of CONV Layer

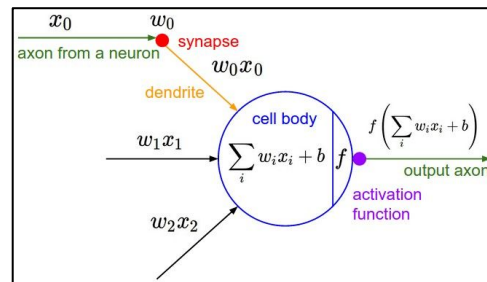
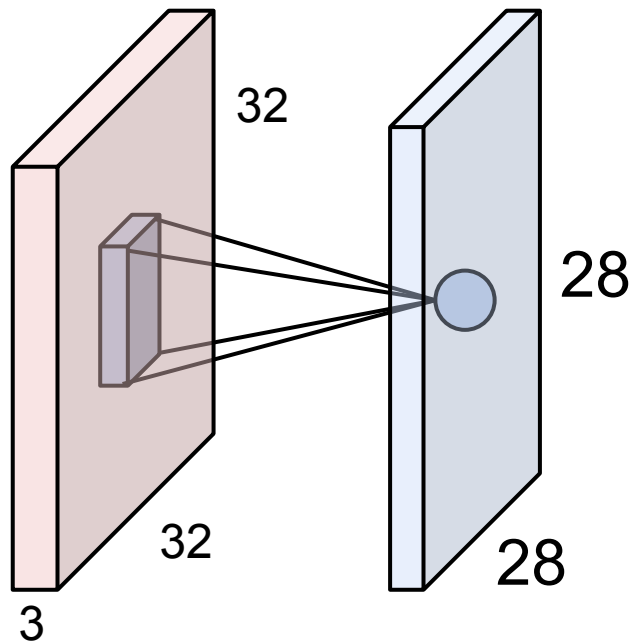


The brain/neuron view of CONV Layer



It's just a neuron with local connectivity...

The brain/neuron view of CONV Layer

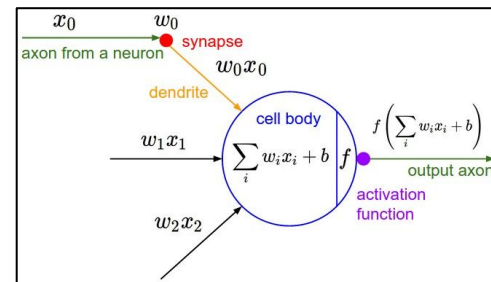
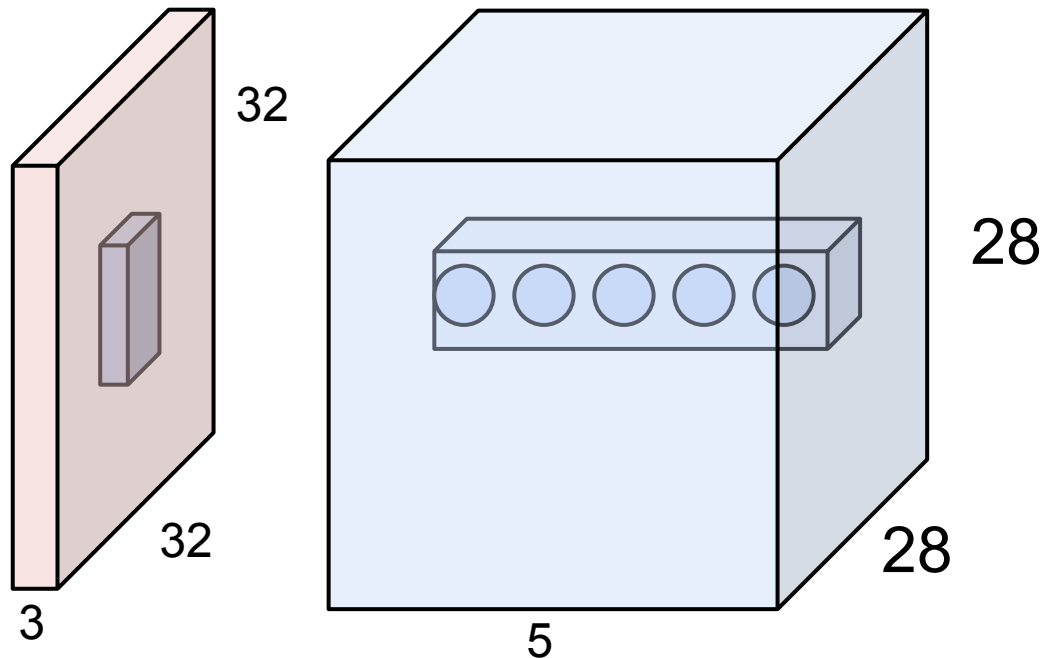


An activation map is a 28x28 sheet of neuron outputs:

1. Each is connected to a small region in the input
2. All of them share parameters

“5x5 filter” -> “5x5 receptive field for each neuron”

The brain/neuron view of CONV Layer



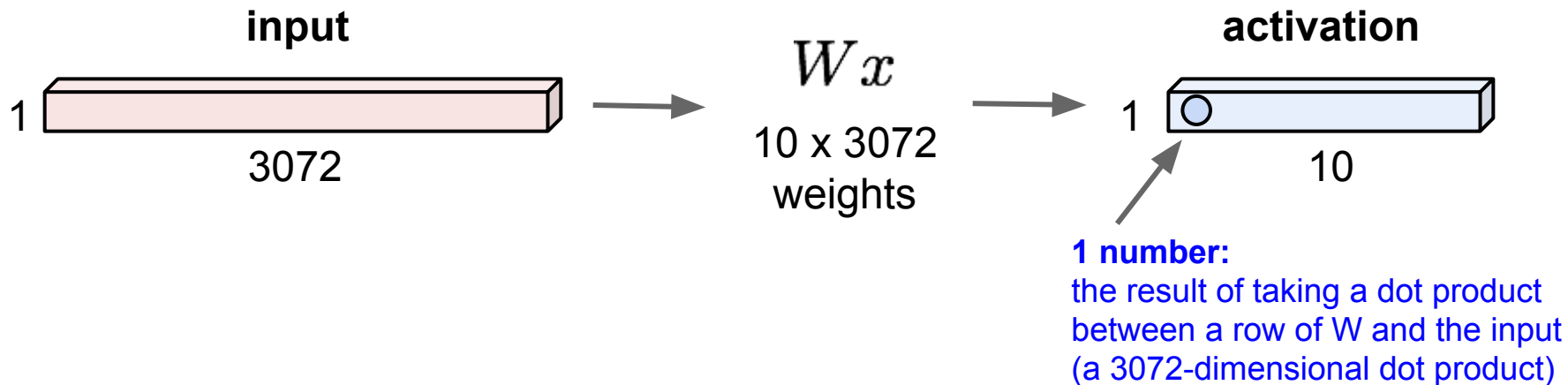
E.g. with 5 filters,
CONV layer consists of
neurons arranged in a 3D grid
(28x28x5)

There will be 5 different
neurons all looking at the same
region in the input volume

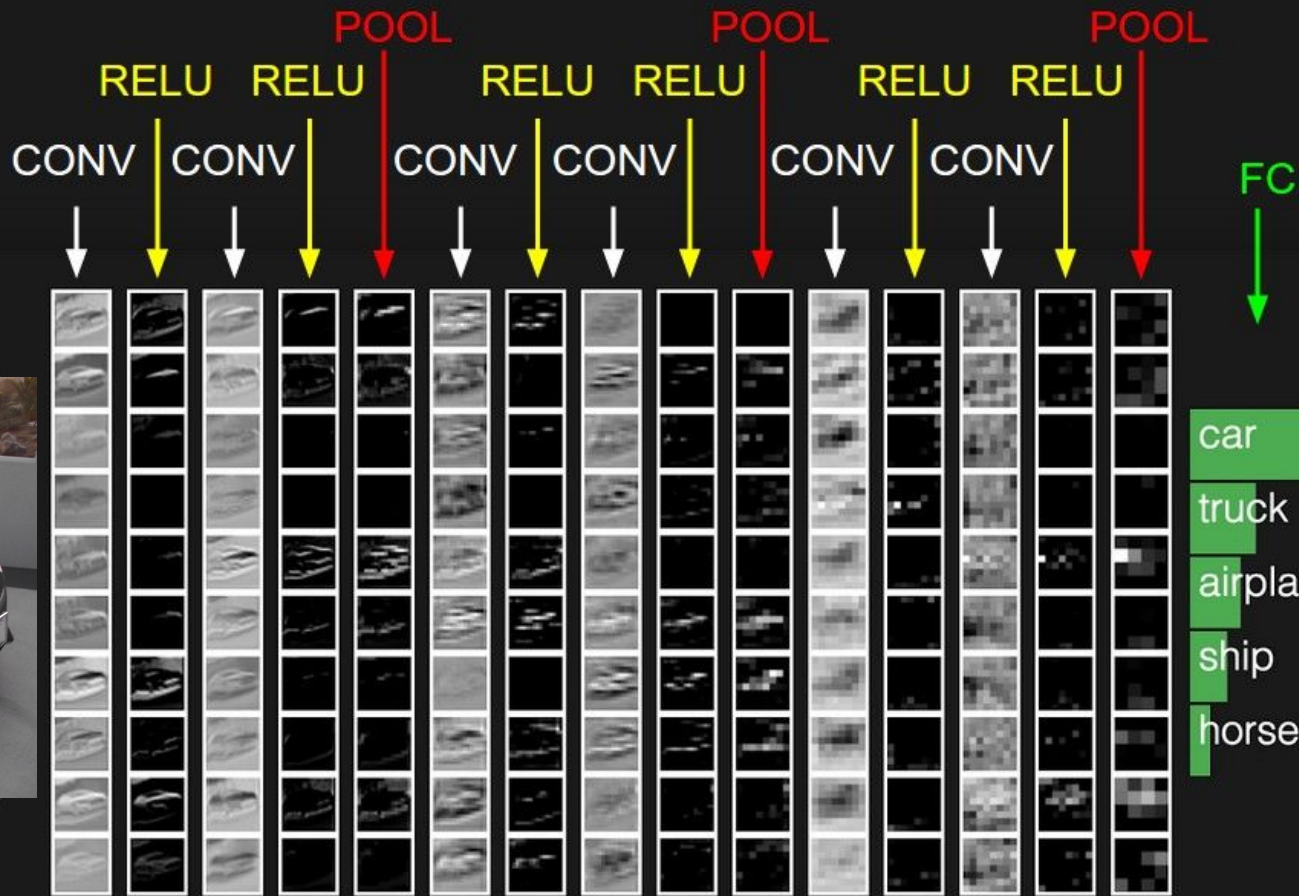
Reminder: Fully Connected Layer

32x32x3 image -> stretch to 3072 x 1

Each neuron
looks at the full
input volume

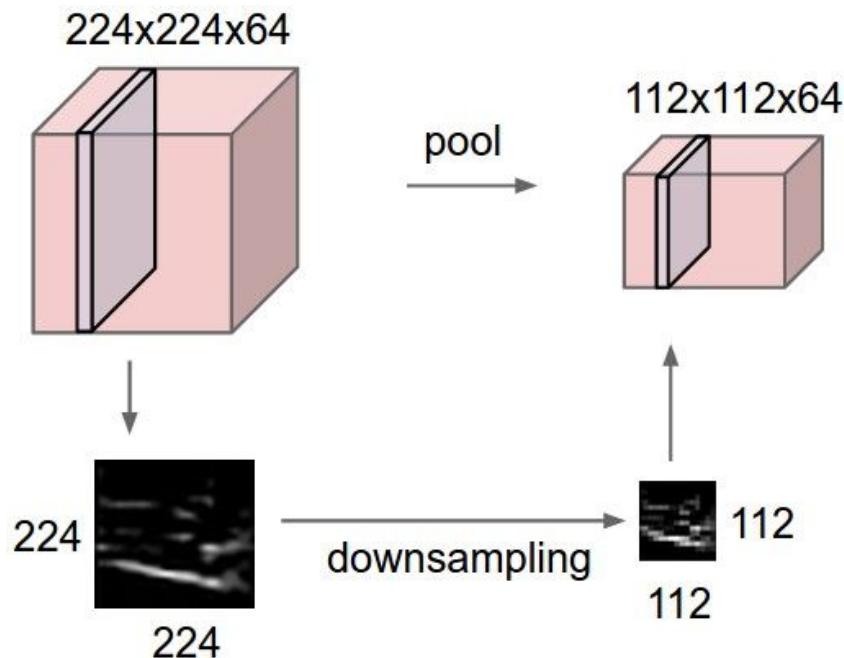


two more layers to go: POOL/FC

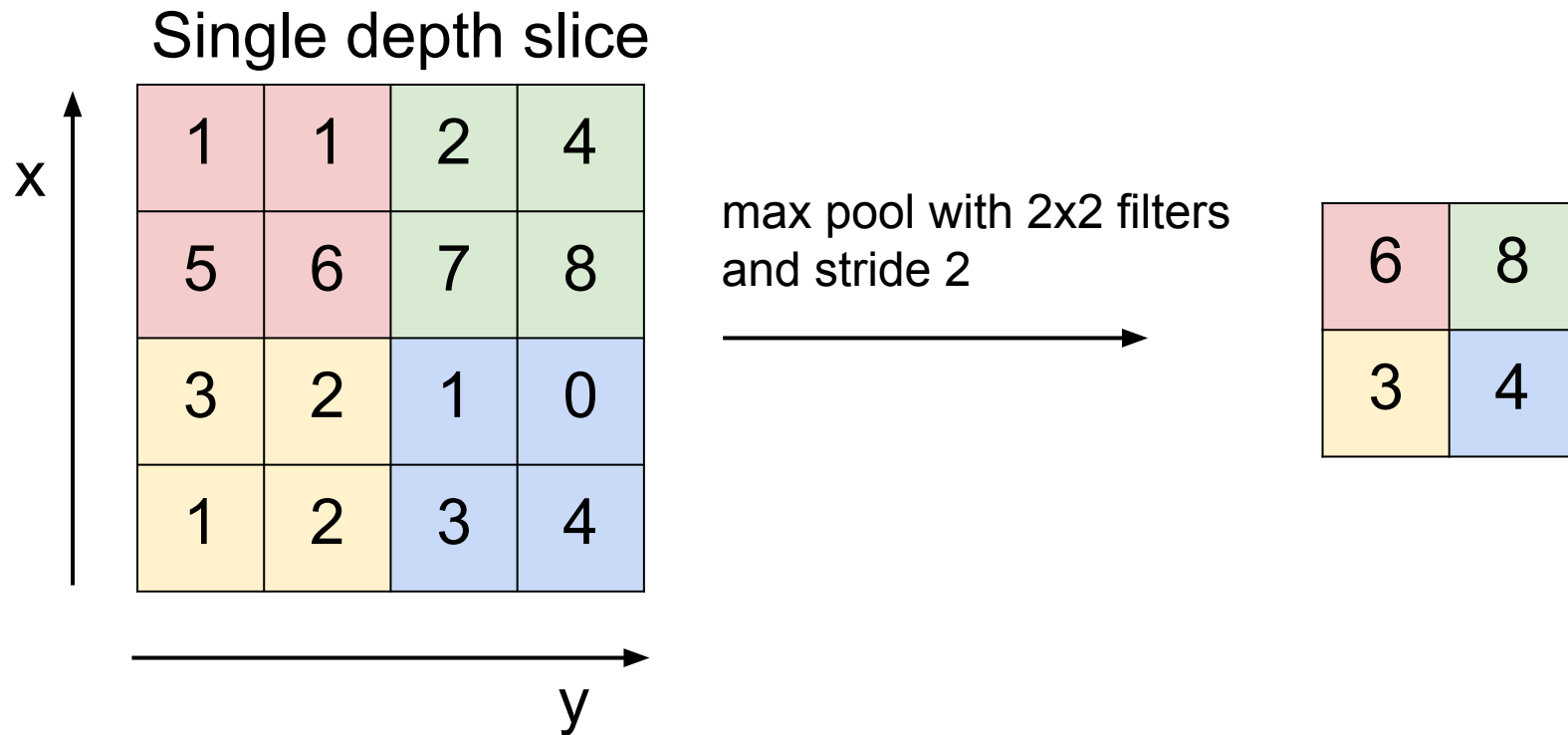


Pooling layer

- makes the representations smaller and more manageable
- operates over each activation map independently:



MAX POOLING



- Accepts a volume of size $W_1 \times H_1 \times D_1$
- Requires three hyperparameters:
 - their spatial extent F ,
 - the stride S ,
- Produces a volume of size $W_2 \times H_2 \times D_2$ where:
 - $W_2 = (W_1 - F)/S + 1$
 - $H_2 = (H_1 - F)/S + 1$
 - $D_2 = D_1$
- Introduces zero parameters since it computes a fixed function of the input
- Note that it is not common to use zero-padding for Pooling layers

Common settings:

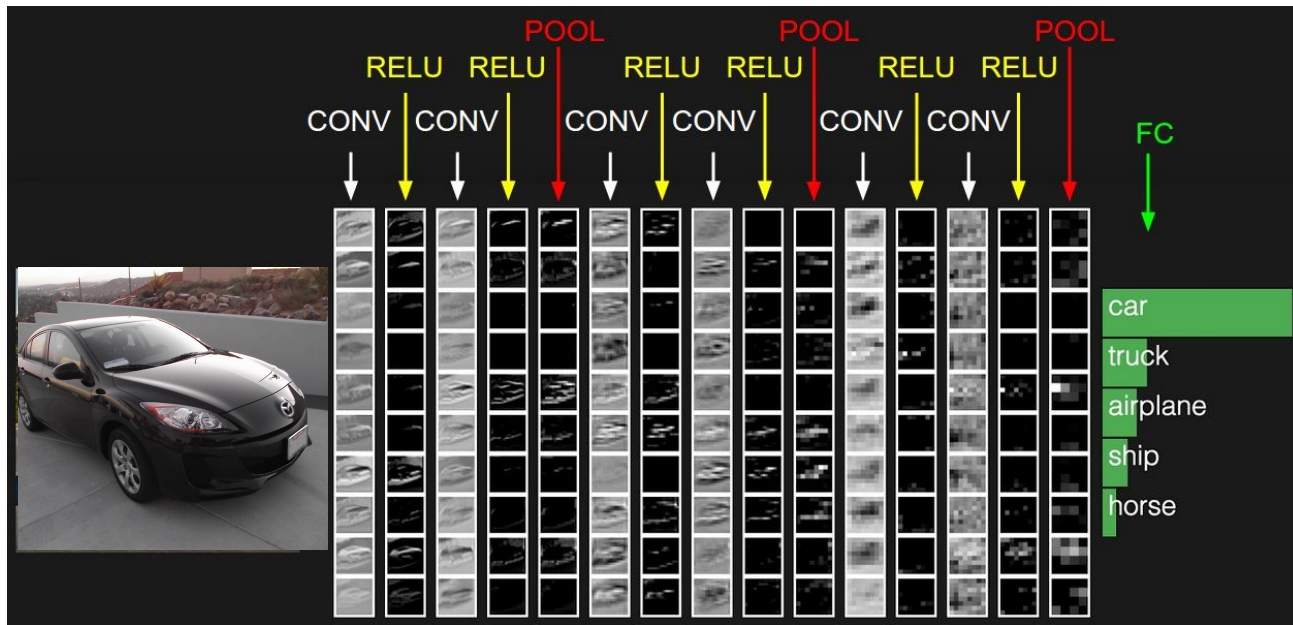
$$F = 2, S = 2$$

$$F = 3, S = 2$$

- Accepts a volume of size $W_1 \times H_1 \times D_1$
- Requires three hyperparameters:
 - their spatial extent F ,
 - the stride S ,
- Produces a volume of size $W_2 \times H_2 \times D_2$ where:
 - $W_2 = (W_1 - F)/S + 1$
 - $H_2 = (H_1 - F)/S + 1$
 - $D_2 = D_1$
- Introduces zero parameters since it computes a fixed function of the input
- Note that it is not common to use zero-padding for Pooling layers

Fully Connected Layer (FC layer)

- Contains neurons that connect to the entire input volume, as in ordinary Neural Networks



[ConvNetJS demo: training on CIFAR-10]

ConvNetJS CIFAR-10 demo

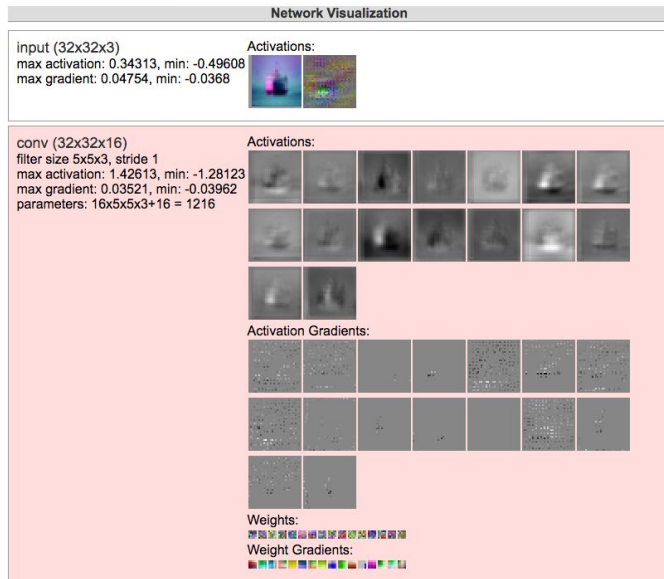
Description

This demo trains a Convolutional Neural Network on the [CIFAR-10 dataset](#) in your browser, with nothing but Javascript. The state of the art on this dataset is about 90% accuracy and human performance is at about 94% (not perfect as the dataset can be a bit ambiguous). I used [this python script](#) to parse the [original files](#) (python version) into batches of images that can be easily loaded into page DOM with img tags.

This dataset is more difficult and it takes longer to train a network. Data augmentation includes random flipping and random image shifts by up to 2px horizontally and vertically.

By default, in this demo we're using Adadelata which is one of per-parameter adaptive step size methods, so we don't have to worry about changing learning rates or momentum over time. However, I still included the text fields for changing these if you'd like to play around with SGD+Momentum trainer.

Report questions/bugs/suggestions to [@karpathy](#).



<http://cs.stanford.edu/people/karpathy/convnetjs/demo/cifar10.html>

Summary

- ConvNets stack CONV, POOL, FC layers
- Trend towards smaller filters and deeper architectures
- Trend towards getting rid of POOL/FC layers (just CONV)
- Historically architectures looked like
 $[(\text{CONV-RELU})^*N\text{-POOL?}]^*M\text{-(FC-RELU)}^*K, \text{SOFTMAX}$
where N is usually up to ~5, M is large, $0 \leq K \leq 2$.
 - but recent advances such as ResNet/GoogLeNet have challenged this paradigm